

The logo features a stylized circular emblem composed of two curved segments, one orange and one red, forming a partial circle.

# Steel Market Update

CRU

## SMU flat rolled market trends analysis

---

*Aug. 12-14, 2024, market survey results*

## Legal notice

This presentation is private and confidential. It must not be disclosed in whole or in part, directly or indirectly, or in any other format without the prior written permission of Steel Market Update and parent CRU International Limited.

CRU International Limited's responsibility is solely to its clients and its liability is limited to the amount of the fees actually paid for professional services.

Although reasonable care and diligence have been used in the preparation of this presentation, we do not guarantee the accuracy of any data, assumptions, forecasts, or other forward-looking statements. We accept no liability to third parties, howsoever arising.

CRU takes information security seriously and currently holds the UK Government approved Cyber Essentials certification. This certifies that we have the appropriate security controls across our organization and third-party suppliers to protect our information assets. CRU also has a privacy policy in place that explains how we handle personal data on our customers.



Where the *steel* community  
comes together.

# Steel Market Update team



**Michael Cowden**  
Chicago  
Managing Editor



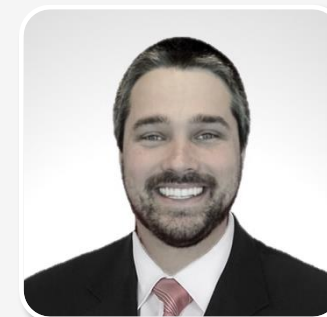
**David Schollaert**  
Atlanta  
Senior Analyst



**Laura Miller**  
Erie, Pa.  
Reporter / Editor



**Ethan Bernard**  
Austin, Texas  
Reporter / Editor



**Brett Linton**  
Atlanta  
Senior Analyst



**Kaylee Turner**  
Cleveland  
Dig. Content Admin.



**Jill Waldman**  
Steamboat Springs, Colo.  
Spons./Expo. Sales Mgr.



**Luis Corona**  
Chicago  
Sr. Account Exec.

The SMU newsletter was developed for active buyers and sellers of flat-rolled steel.

Prices | Momentum | Sentiment | Trends | Analysis

For more information visit [www.steelmarketupdate.com](http://www.steelmarketupdate.com)

# SMU flat rolled market trends analysis



Our goal is to provide quality information to the flat-rolled steel industry.

Our survey is by invitation only. We ask companies, mostly in manufacturing and distribution, to participate.

All responses are kept confidential and are never attributed to the individual or company responding.

To become a data provider, contact:  
[david@steelmarketupdate.com](mailto:david@steelmarketupdate.com).

# Upcoming events



**SMU Steel Summit 2024**  
 Aug. 26-28, 2024 | Atlanta  
 Georgia International Convention Center



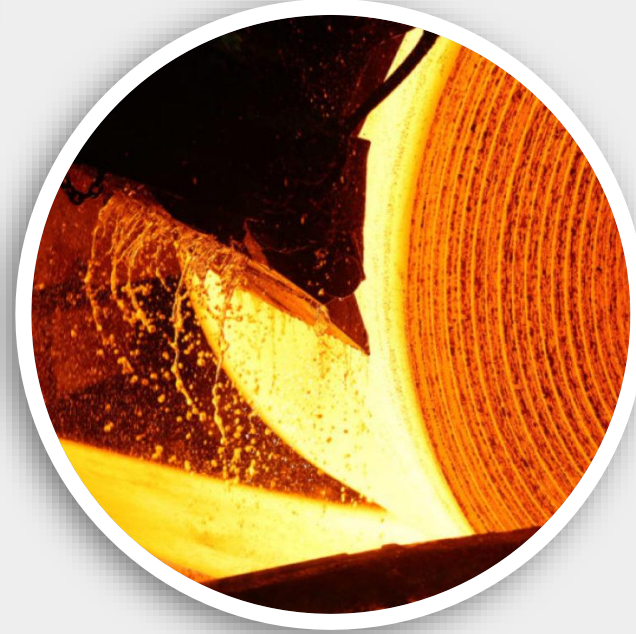
**Live Steel Hedging 101 Workshop**  
 Sept. 25, 2024 | Chicago  
 Hyatt Centric Mag Mile



**Live Steel 101 Workshop**  
 Oct. 8-9, 2024 | Columbus, Miss.

For more information about our workshops and conferences visit:

[www.steelmarketupdate.com/events-and-training/](http://www.steelmarketupdate.com/events-and-training/) or e-mail our team at [events@steelmarketupdate.com](mailto:events@steelmarketupdate.com).



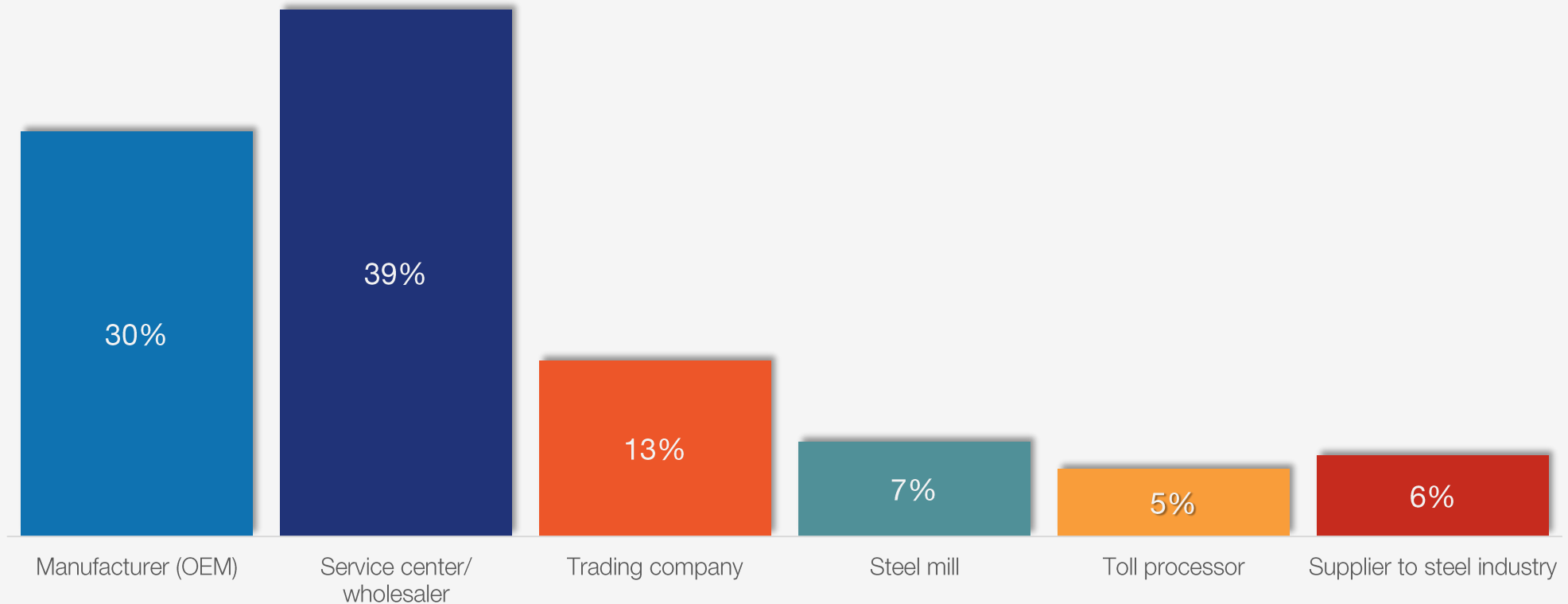
Don't just read our data,  
**see your company's  
experience reflected in it.**

Contact [david@steelmarketupdate.com](mailto:david@steelmarketupdate.com) for participation information.



# Survey participants

Our survey is by invitation only. Over 1,000 companies, mostly in the manufacturing or distribution industries, are asked to participate. Here are the percentages of participation in this week's survey by market sector.

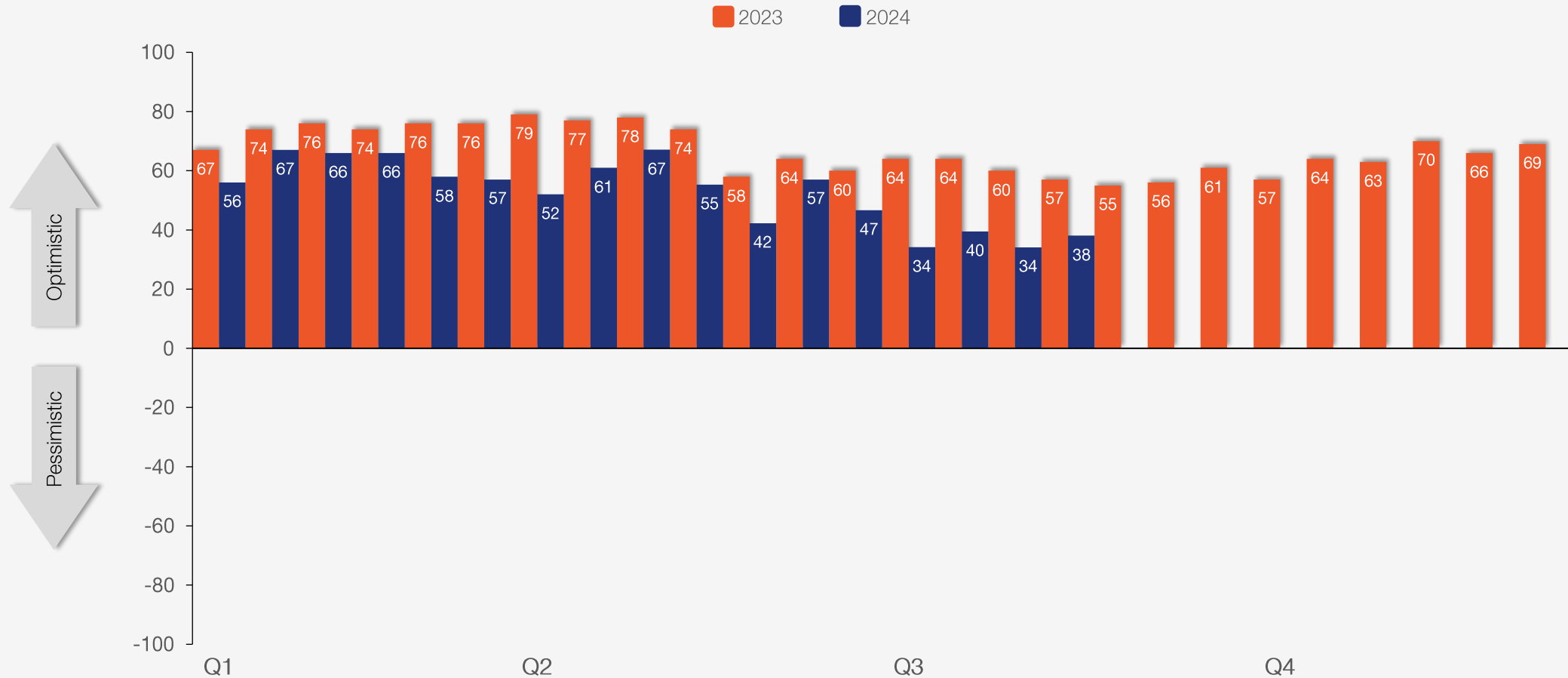




# Steel buyers' sentiment

## *Up four points to +38*

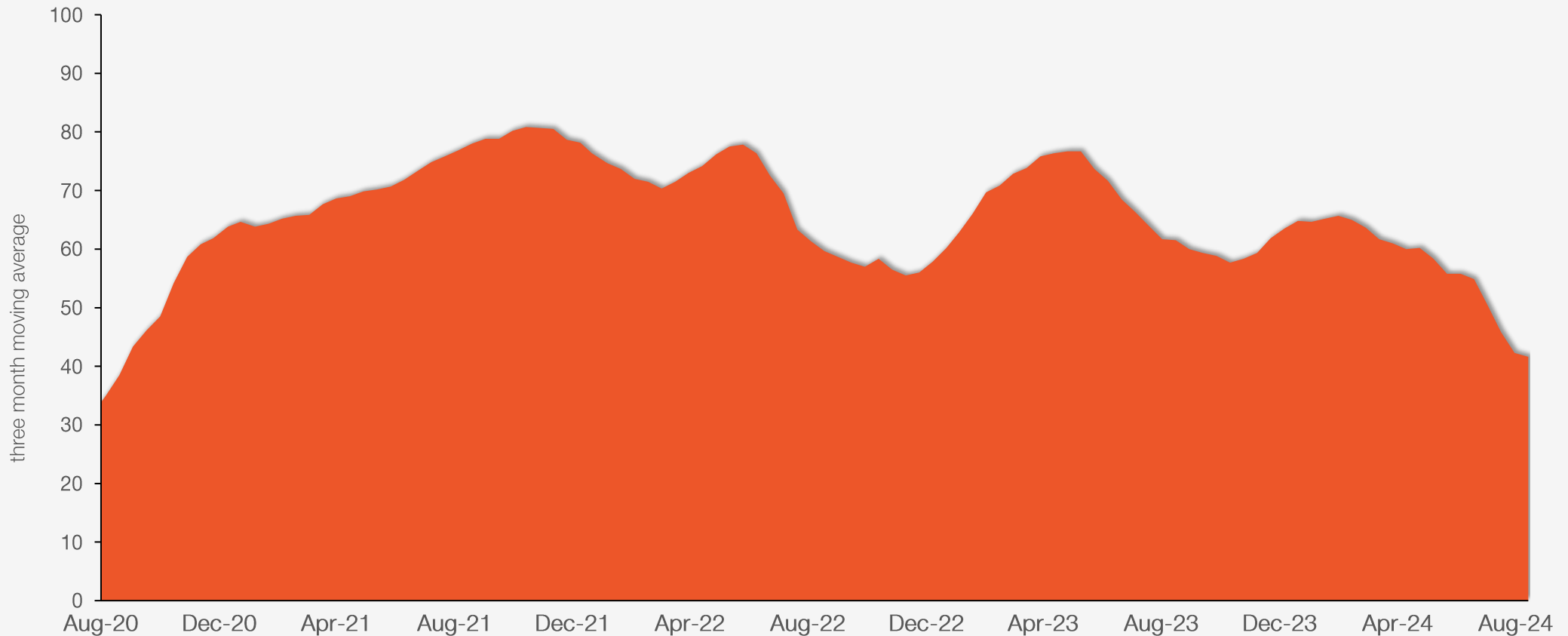
SMU's current steel buyers' sentiment index, with data through Aug. 14, 2024.



# Steel buyers' sentiment

## *Three-month moving average at +41.60*

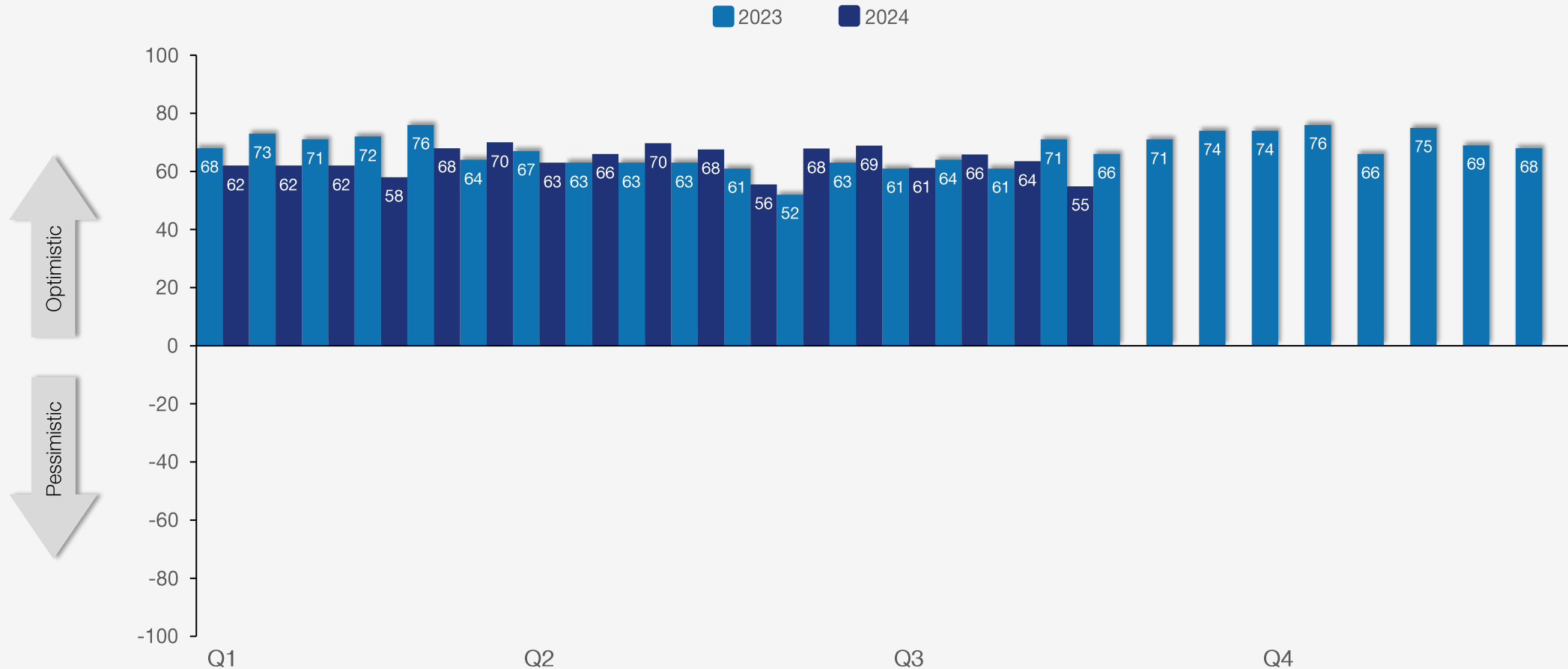
SMU's current 3MMA steel buyers' sentiment index, with data through Aug. 14, 2024.



# Steel buyers' future sentiment

## *Down nine points to +55*

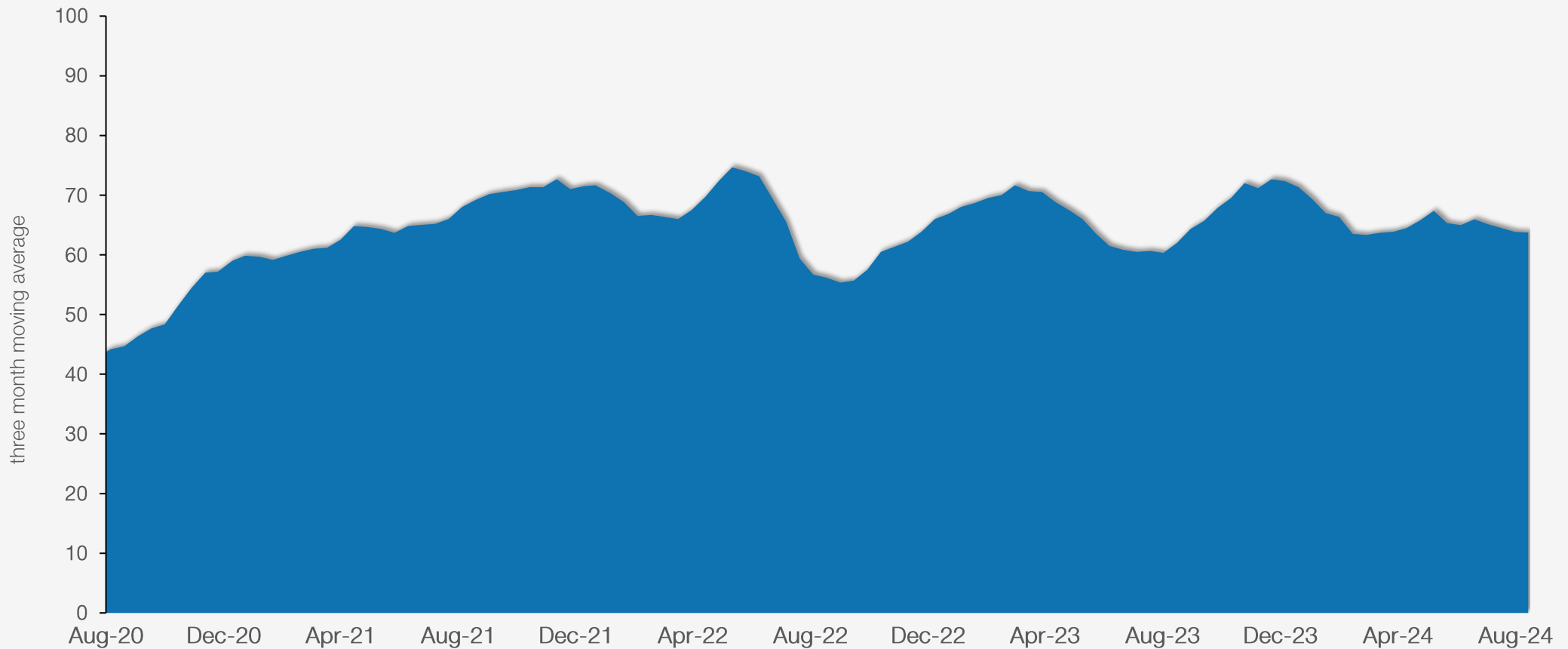
SMU's future steel buyers' sentiment index, with data through Aug. 14, 2024.



# Steel buyers' future sentiment

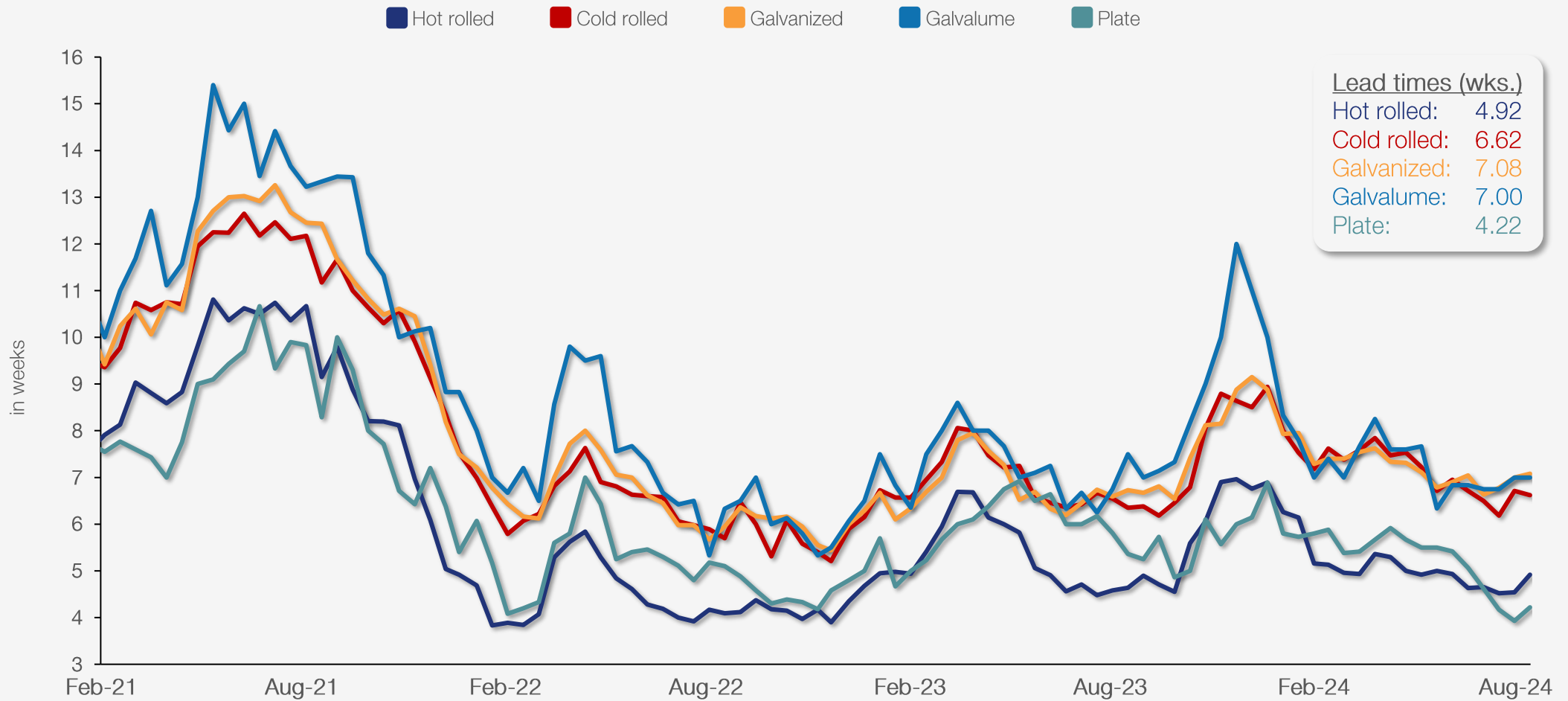
## *Three-month moving average at +63.72*

SMU's future 3MMA steel buyers' sentiment index, with data through Aug. 14, 2024.



# Steel mill lead times by product

SMU lead times on new steel orders by product through Aug. 14, 2024.

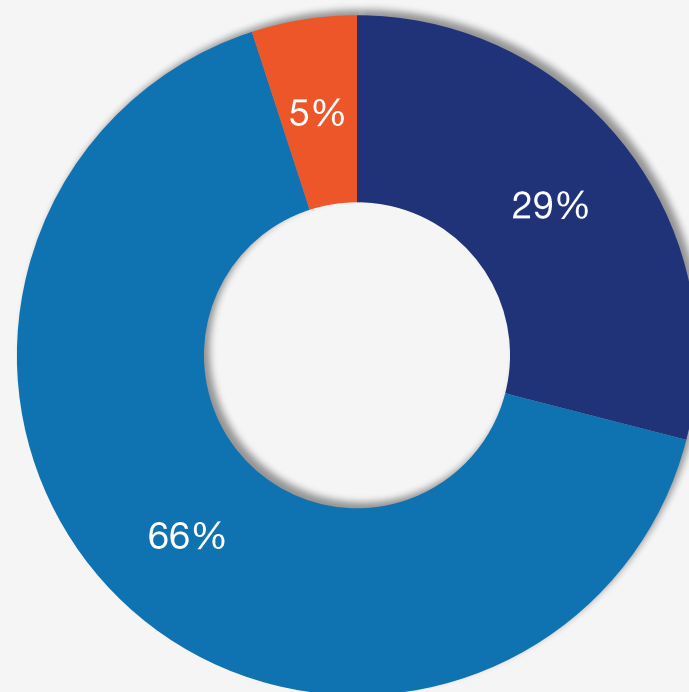


# Direction of steel mill lead times

Two months from now, will lead times be extending, flat, or contracting?

■ Extending   ■ Flat   ■ Contracting

Aug. 14, 2024

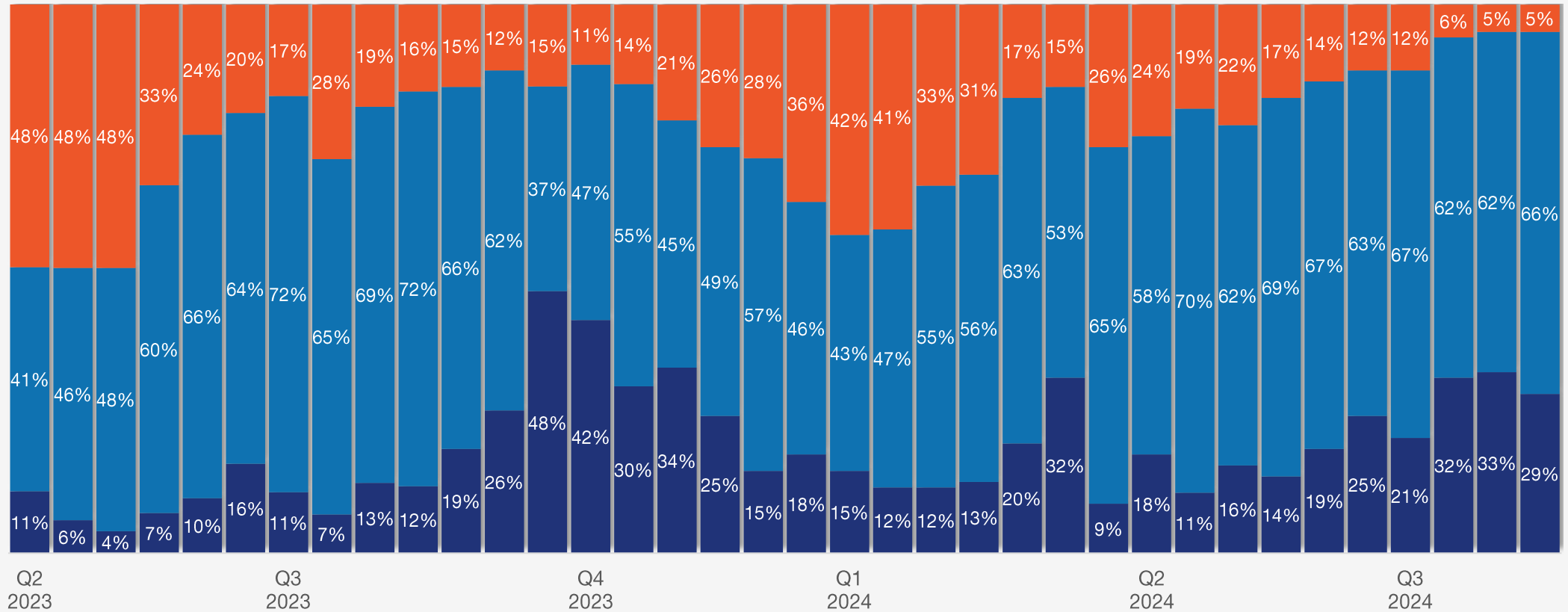


# Direction of steel mill lead times history

Two months from now, will lead times be extending, flat, or contracting?

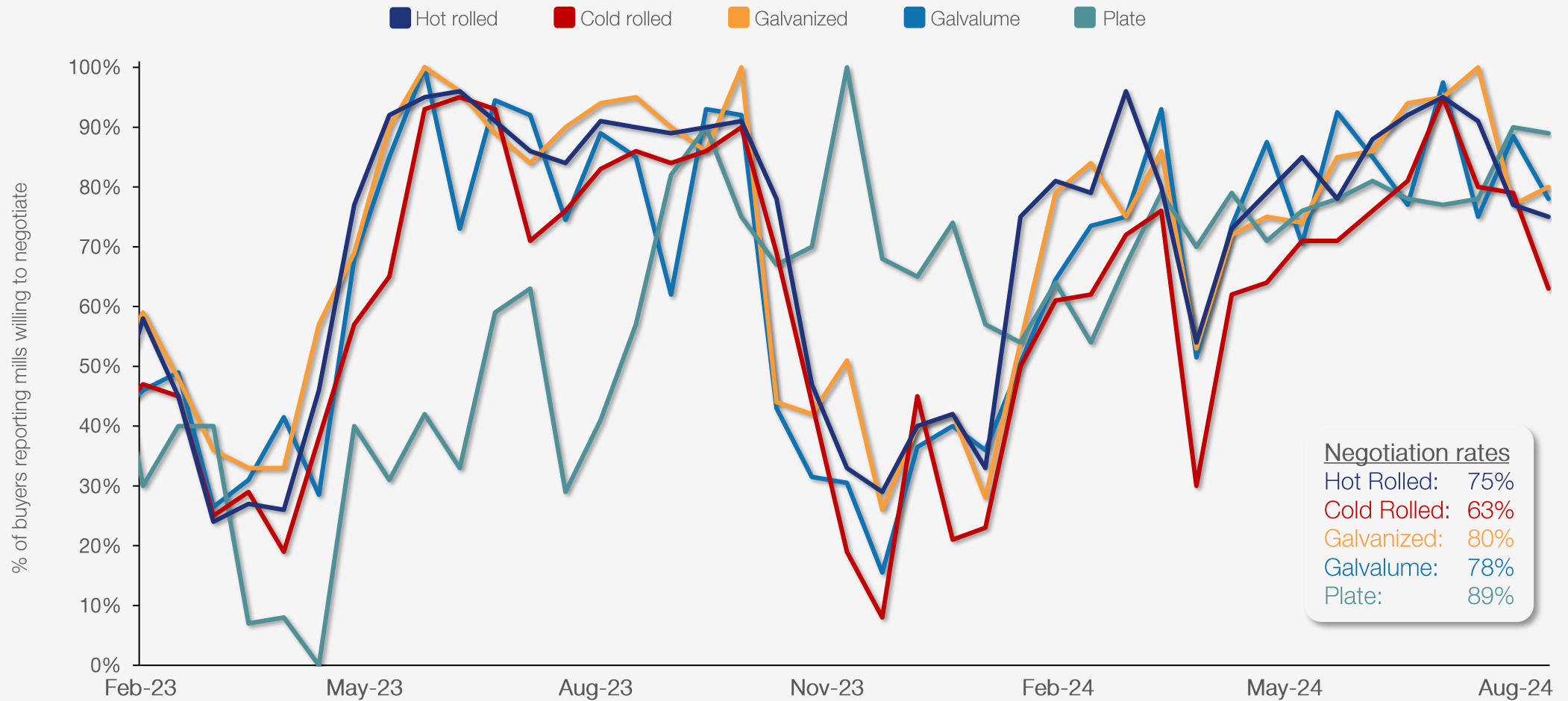
■ Extending ■ Flat ■ Contracting

out of 100%



# Steel mill negotiations

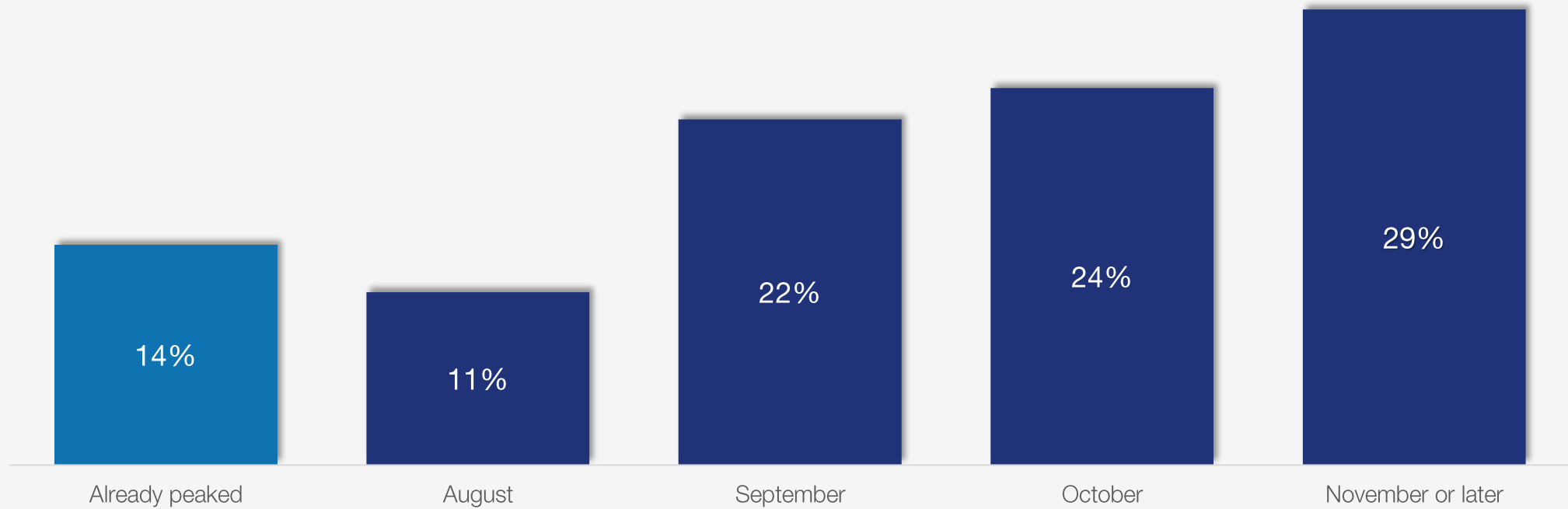
SMU's price negotiations on new steel orders by product through Aug. 14, 2024.





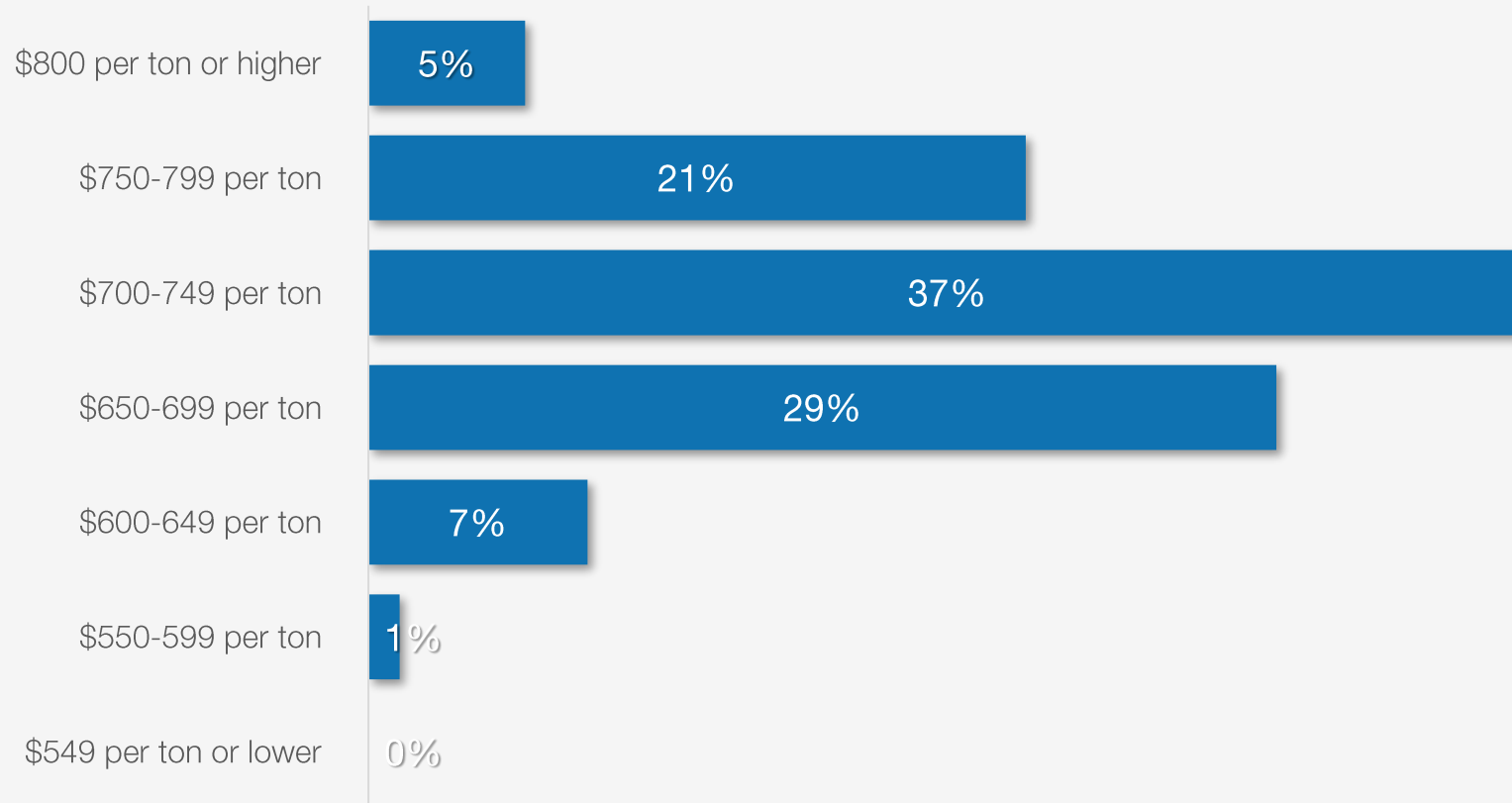
# Hot rolled inflection point

When do you think steel prices will peak?



# Future hot rolled prices

Where do you think HRC prices will be in two months?

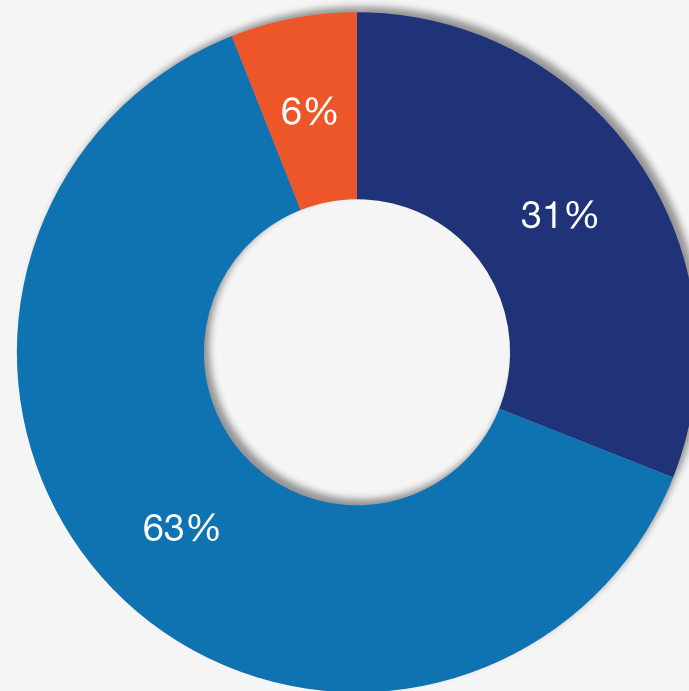


# September scrap

Prime scrap prices in September will be:

■ Up   
 ■ Sideways   
 ■ Down

Aug. 14, 2024

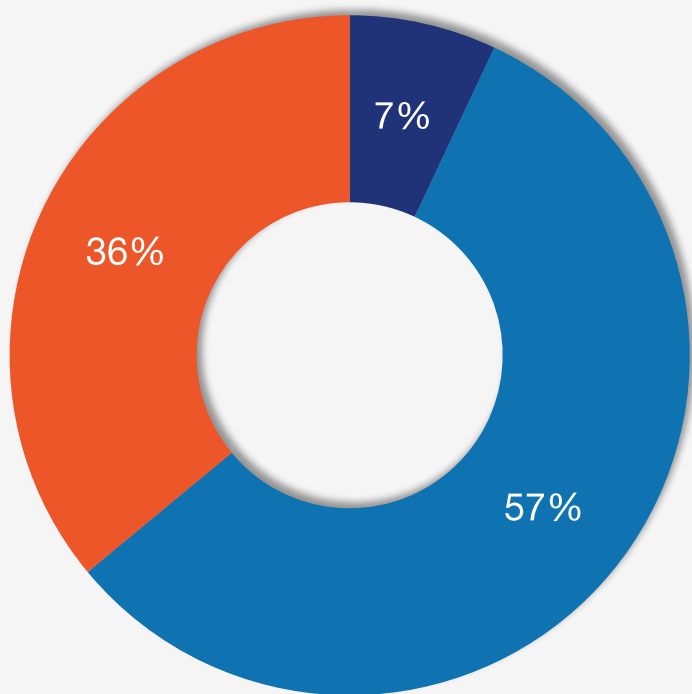


# Business forecasts

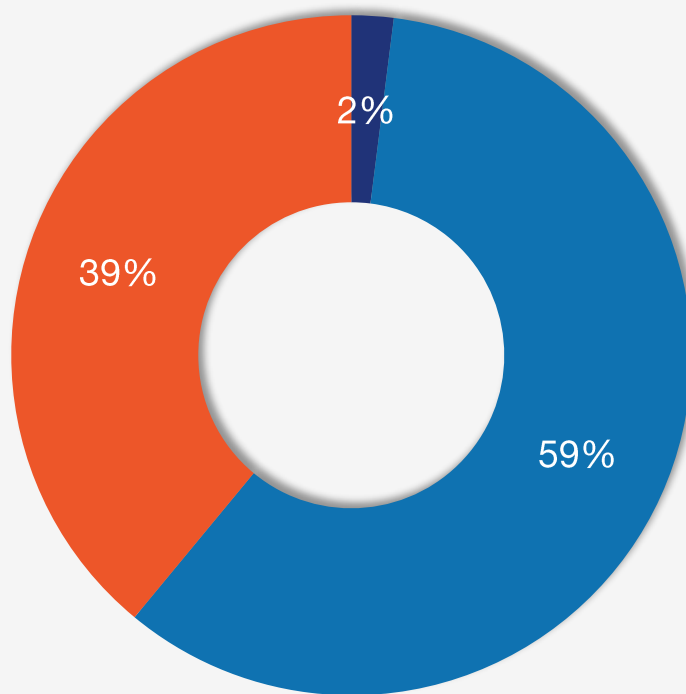
How will your company perform this month compared to your forecast?

■ We will exceed forecast    
 ■ We will meet forecast    
 ■ We will not meet forecast

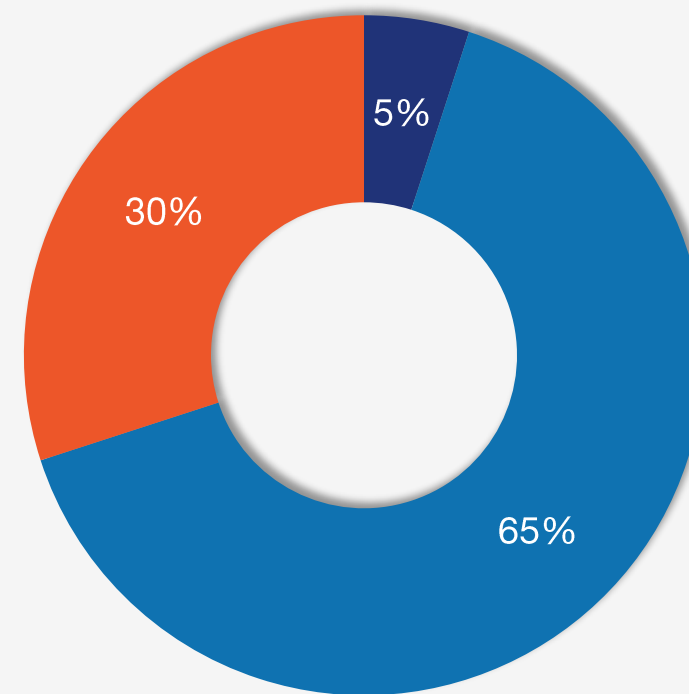
June 19, 2024



July 17, 2024



Aug. 14, 2024

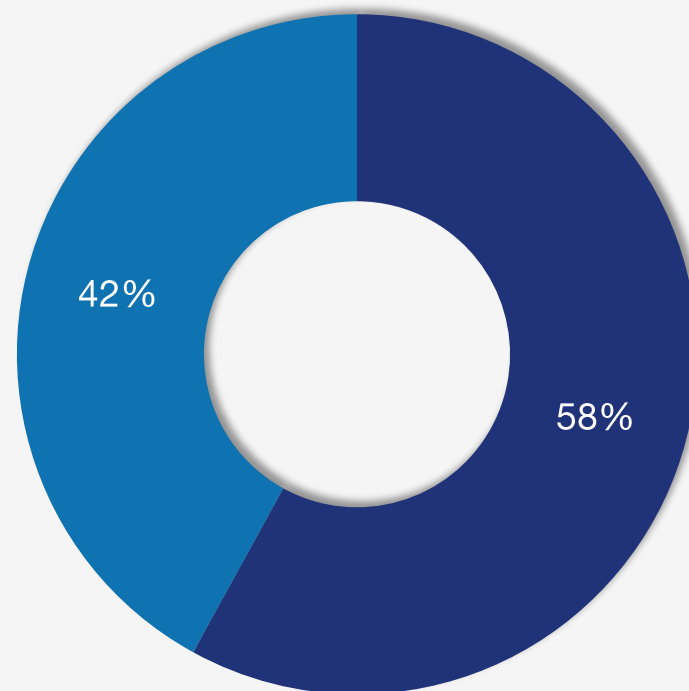


# Staying on the sidelines?

Are you an active buyer or on the sidelines?

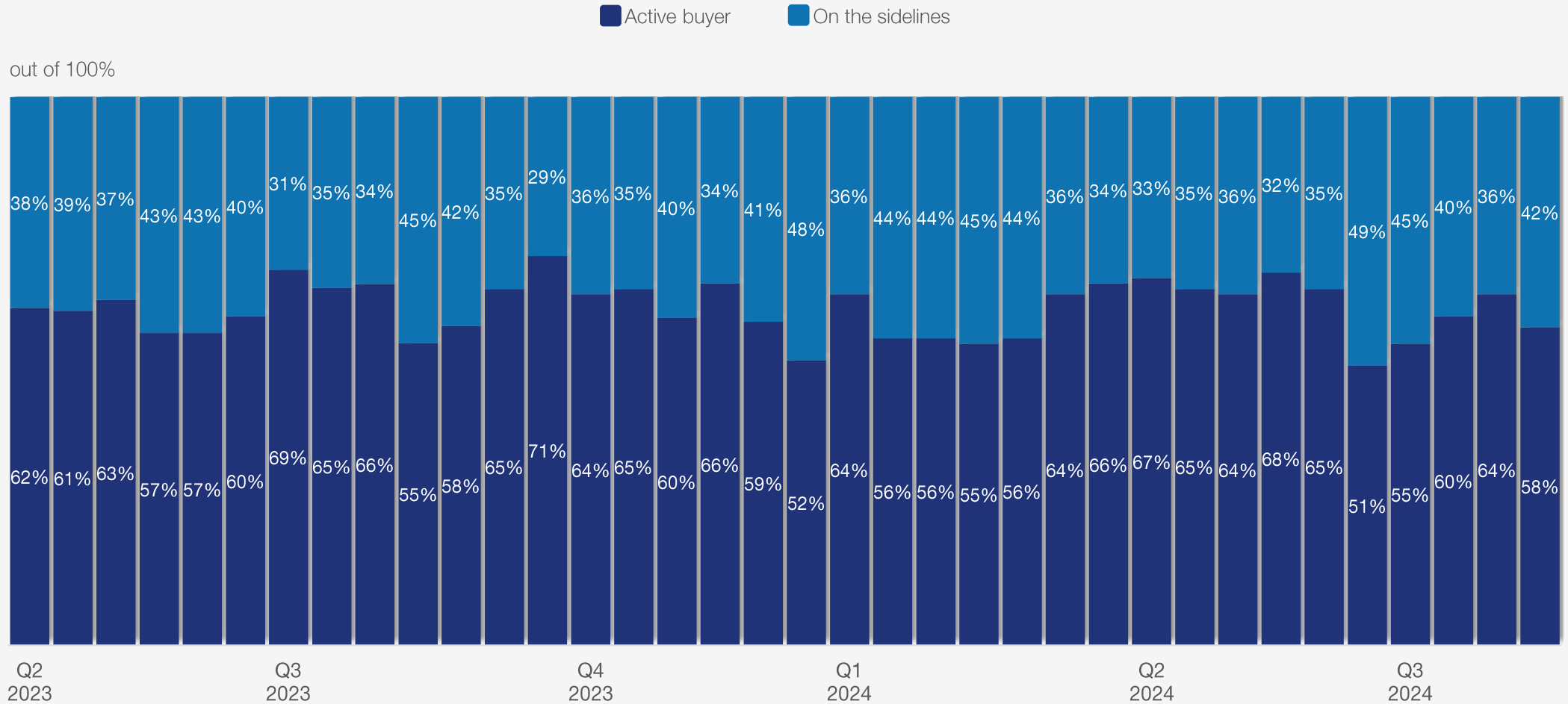
■ Active buyer   ■ On the sidelines

Aug. 14, 2024



# Staying on the sidelines history

Are you an active buyer or on the sidelines?

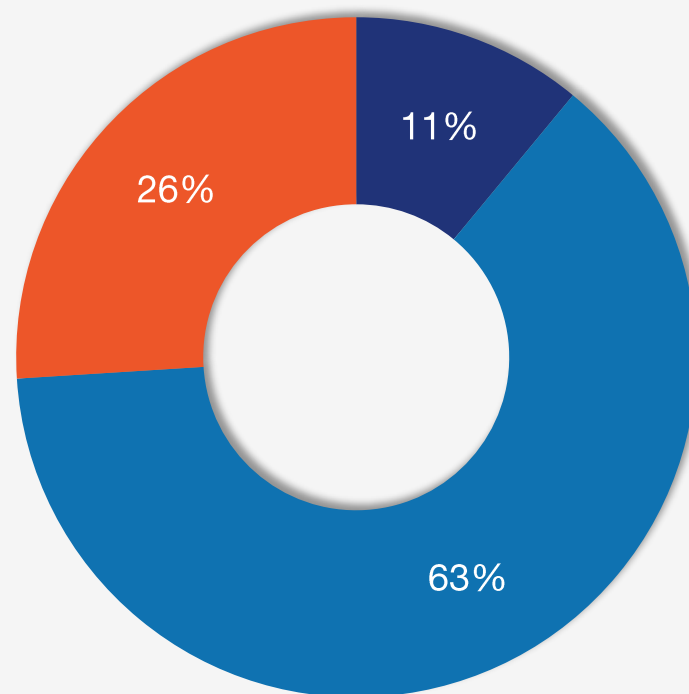


# Overall demand

How is demand for your products?

■ Improving   ■ Stable   ■ Declining

Aug. 14, 2024

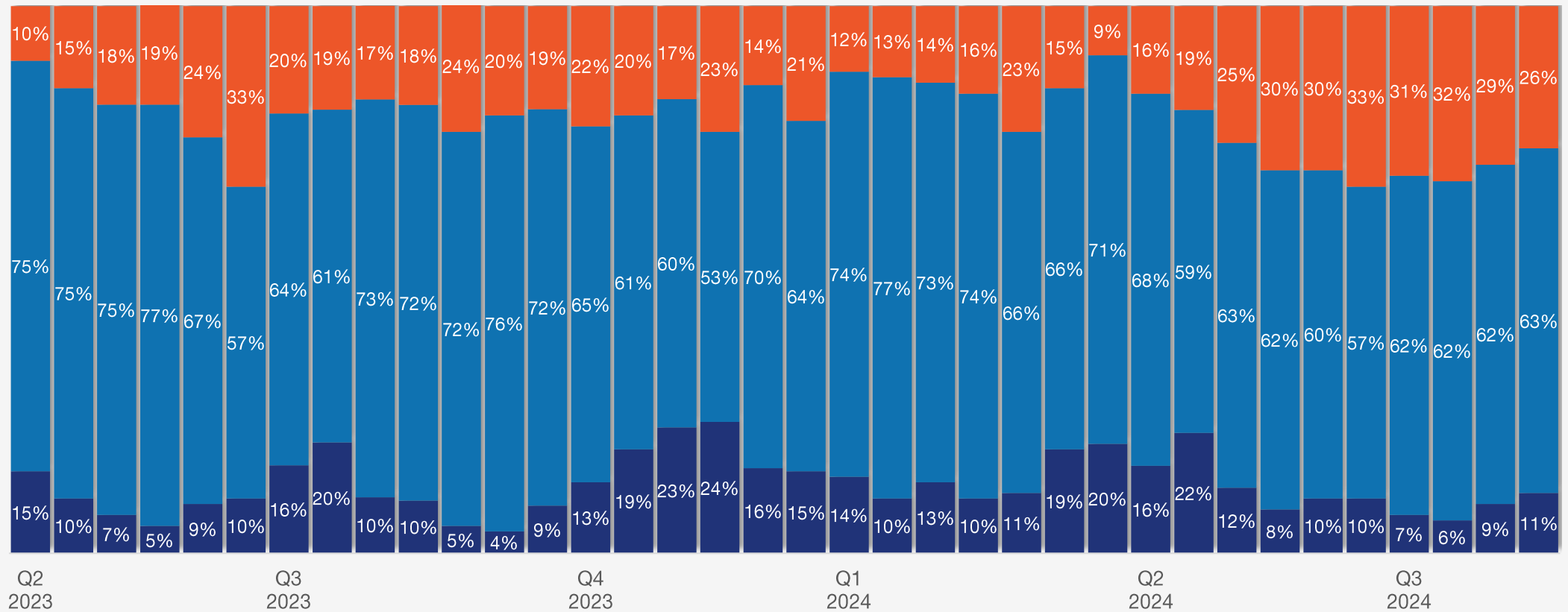


# Overall demand history

How is demand for your products?

■ Improving 
 ■ Stable 
 ■ Declining

out of 100%





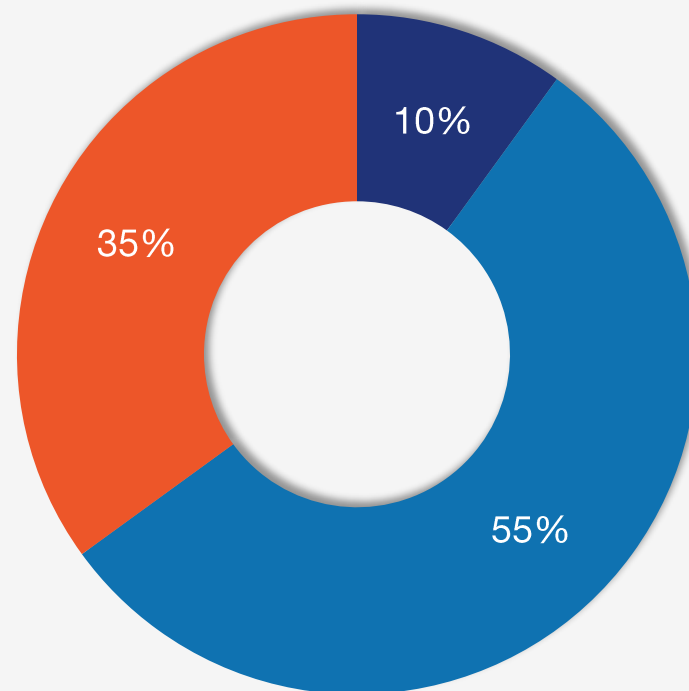
# Manufacturer purchases

## *Manufacturers*

Is your company buying more, less, or the same amount of flat-rolled steel compared to one year ago?

■ More   ■ Same   ■ Less

Aug. 14, 2024



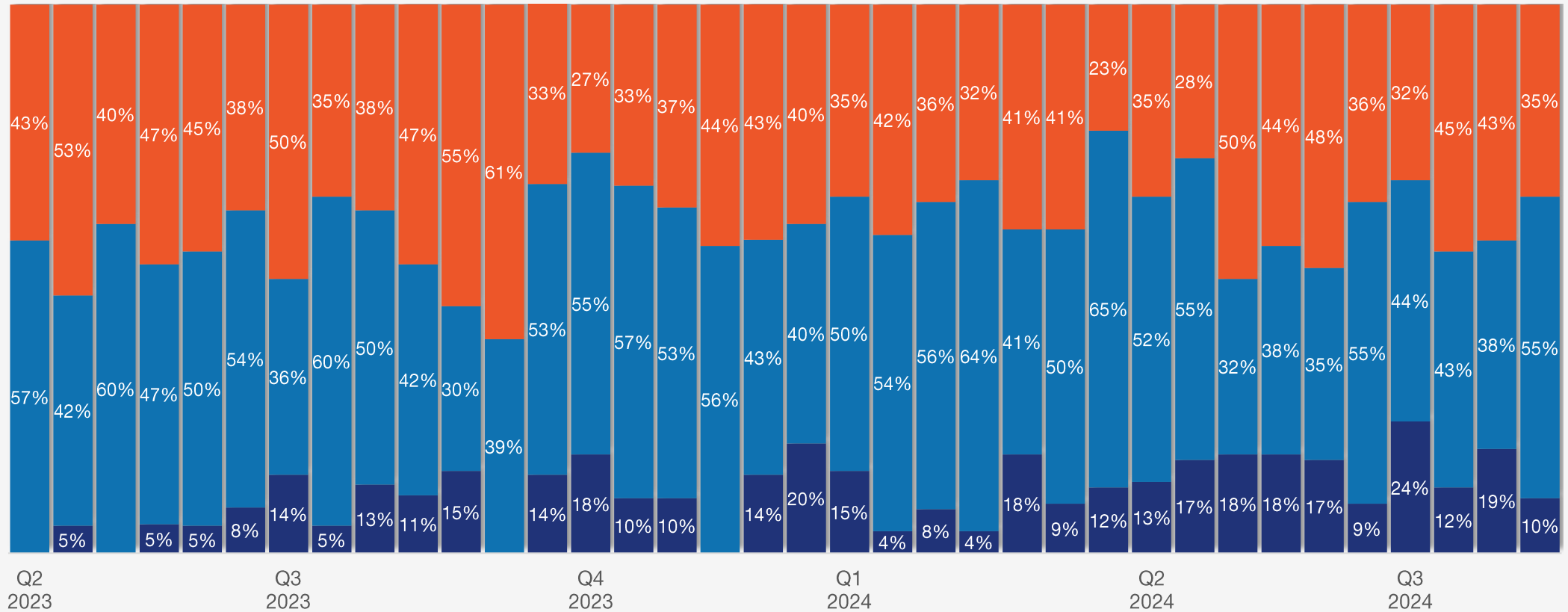
# Manufacturer purchases history

## *Manufacturers*

Is your company buying more, less, or the same amount of flat-rolled steel compared to one year ago?

More Same Less

out of 100%



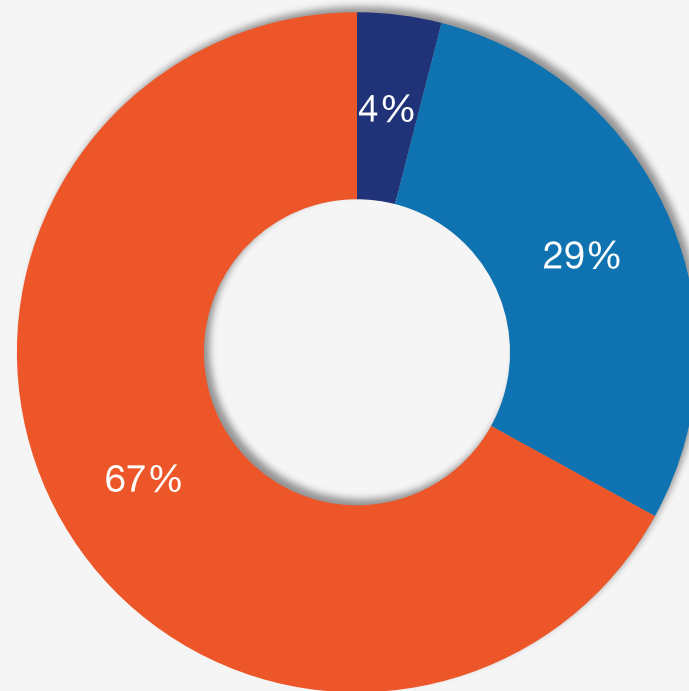
# Service center releases

## *Service centers*

How do you see your customer releases (demand) for your products compared to one year ago?

■ Releasing more steel    
 ■ Releasing the same amount of steel    
 ■ Releasing less steel

Aug. 14, 2024



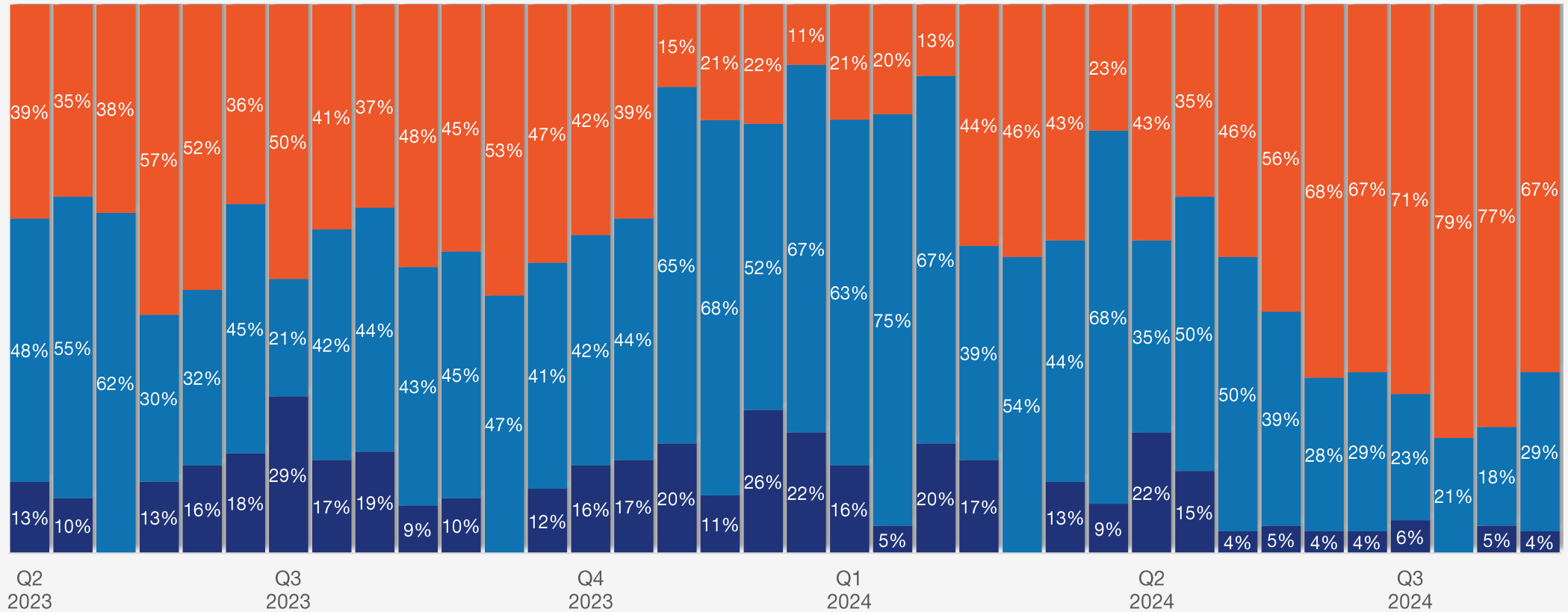
# Service center releases history

## *Service centers*

How do you see your customer releases (demand) for your products compared to one year ago?

■ Releasing more steel    
 ■ Releasing the same amount of steel    
 ■ Releasing less steel

out of 100%



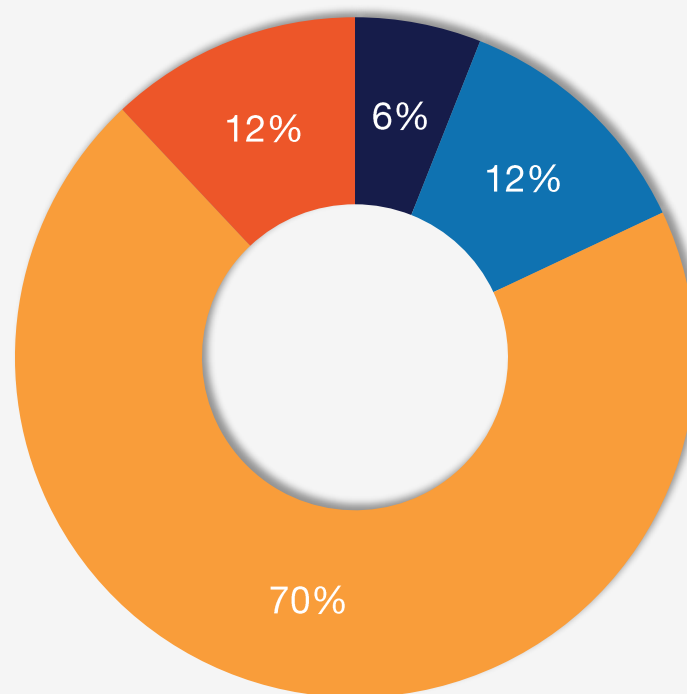
# Manufacturer demand

## *Manufacturers*

Demand for your products will \_\_\_\_\_ over the next three months based on current order flows.

Increase substantially
  Increase marginally
  Remain the same
  Decline marginally
  Decline substantially

Aug. 14, 2024



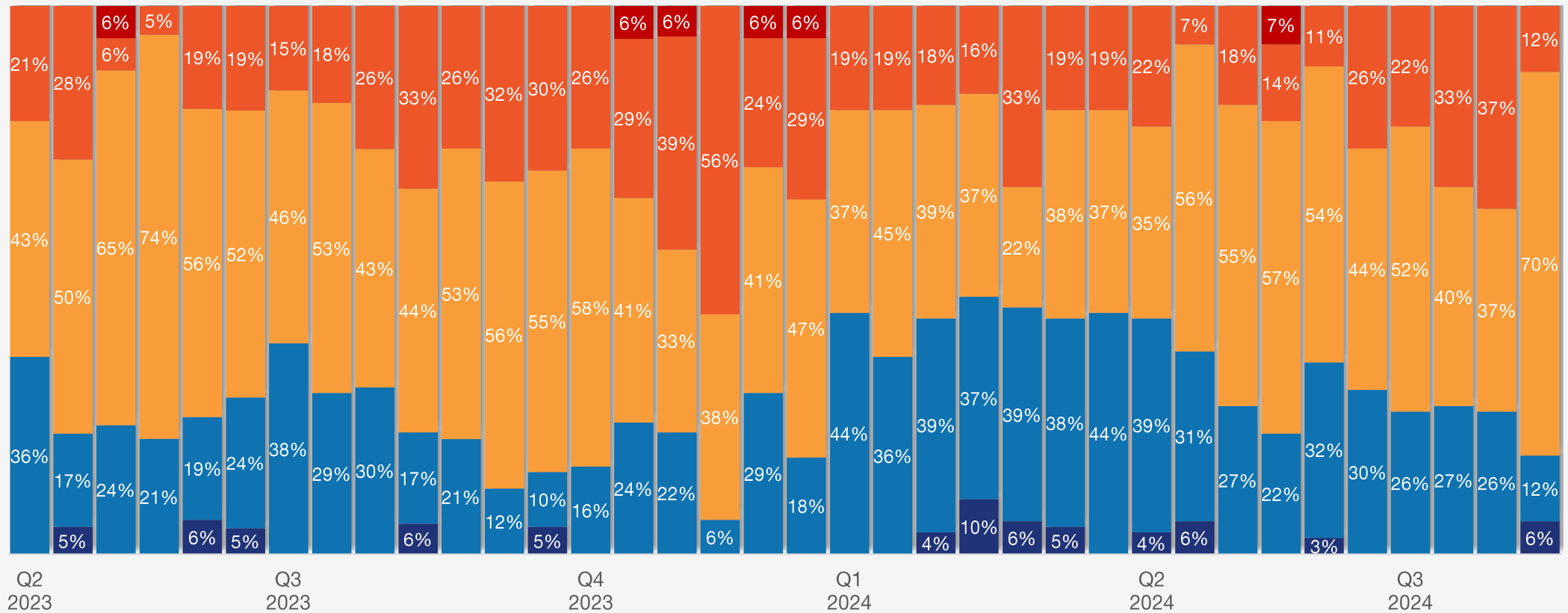
# Manufacturer demand history

## Manufacturers

Demand for your products will \_\_\_\_\_ over the next three months based on current order flows.

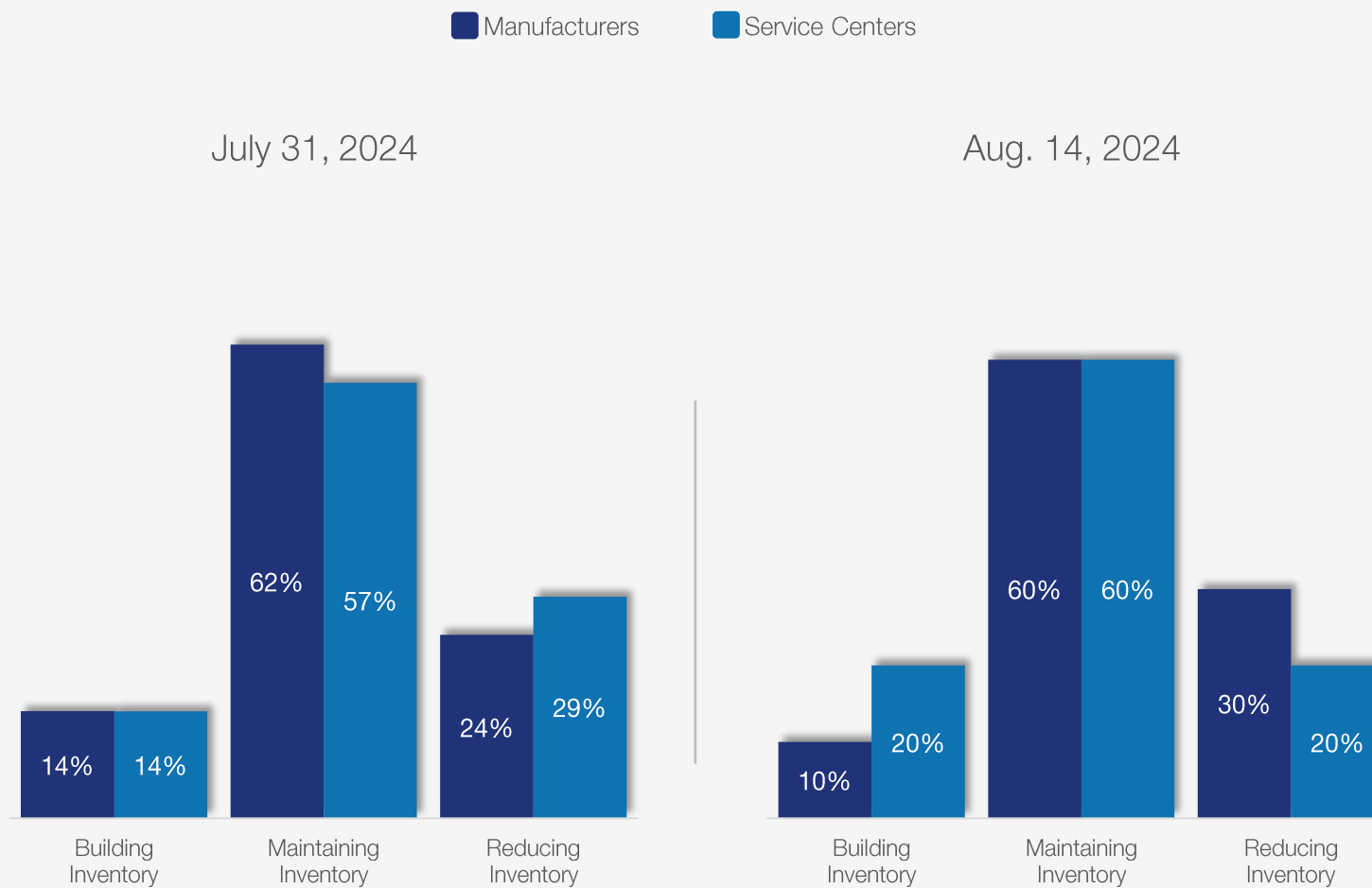
■ Increase substantially    
 ■ Increase marginally    
 ■ Remain the same    
 ■ Decline marginally    
 ■ Decline substantially

out of 100%



# Manufacturer and service center inventory buying patterns

Is your company building, reducing, or maintaining its flat-rolled steel inventory?



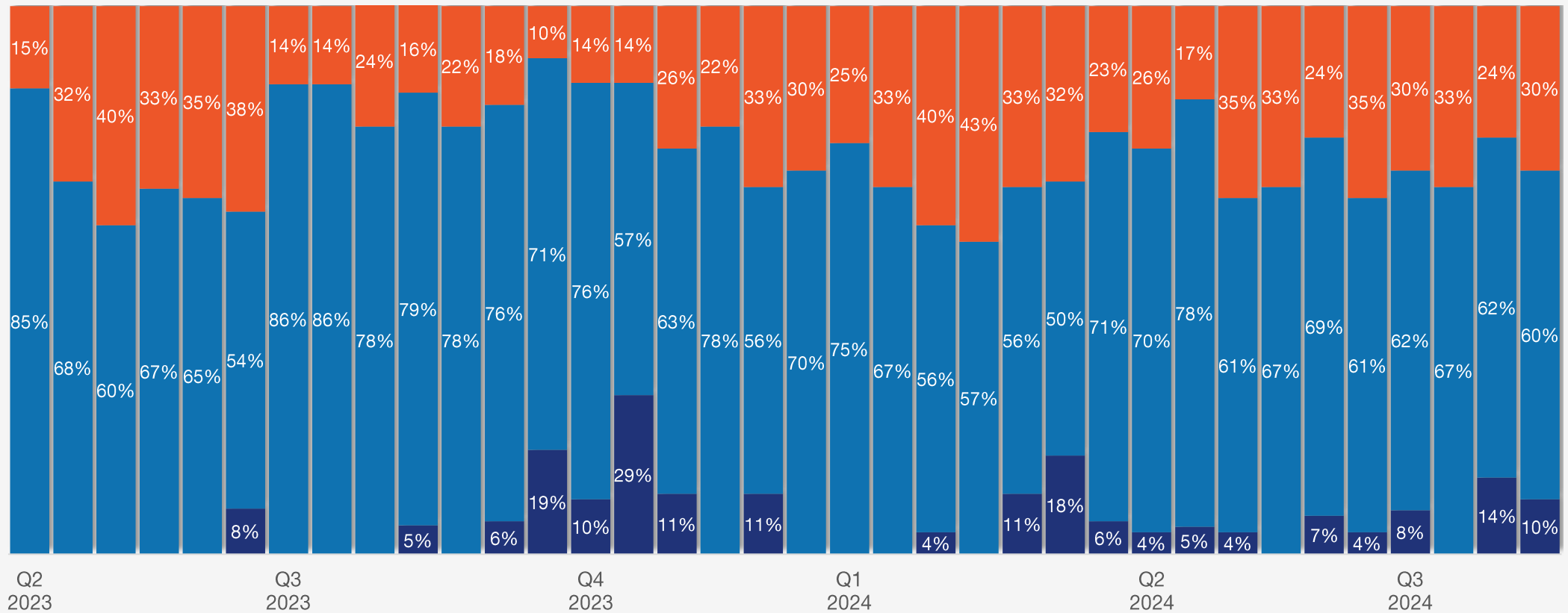
# Manufacturer inventory buying history

## *Manufacturers*

Is your company building, reducing, or maintaining its flat-rolled steel inventory?

■ Building inventory    
 ■ Maintaining inventory    
 ■ Reducing inventory

out of 100%





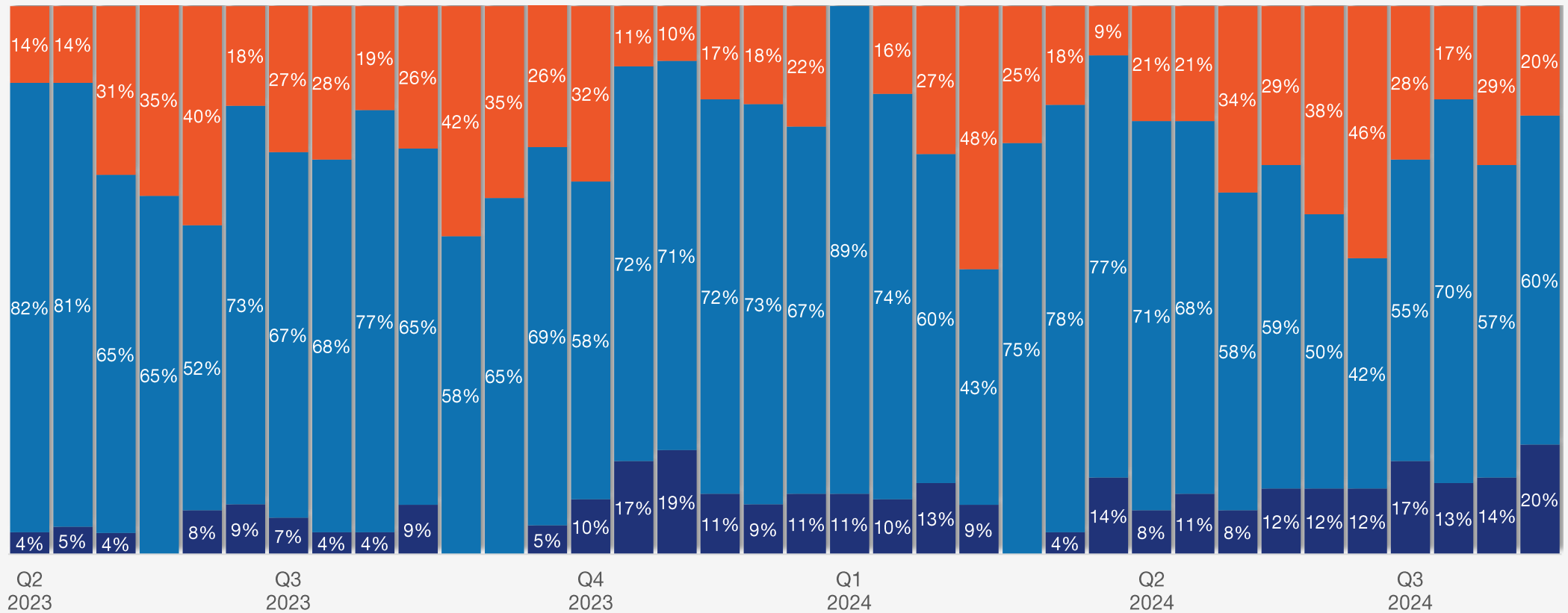
# Service center inventory buying history

## Service centers

Is your company building, reducing, or maintaining its flat-rolled steel inventory?

■ Building inventory    
 ■ Maintaining inventory    
 ■ Reducing inventory

out of 100%



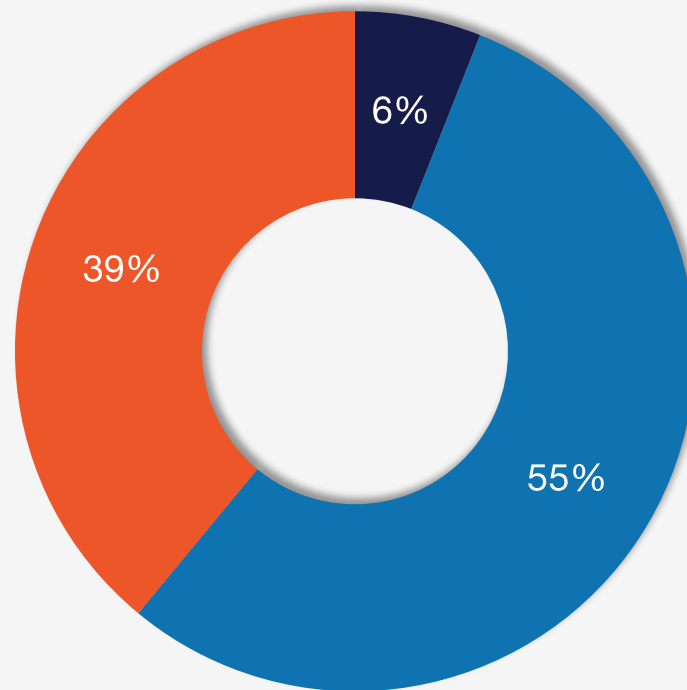
# Manufacturers' view of service center selling prices

## *Manufacturers*

Which comment do you feel is representative of service center pricing right now compared to two weeks ago?

- We see prices increasing from our service centers
- We see stable prices from our service centers
- We see prices decreasing from our service centers

Aug. 14, 2024



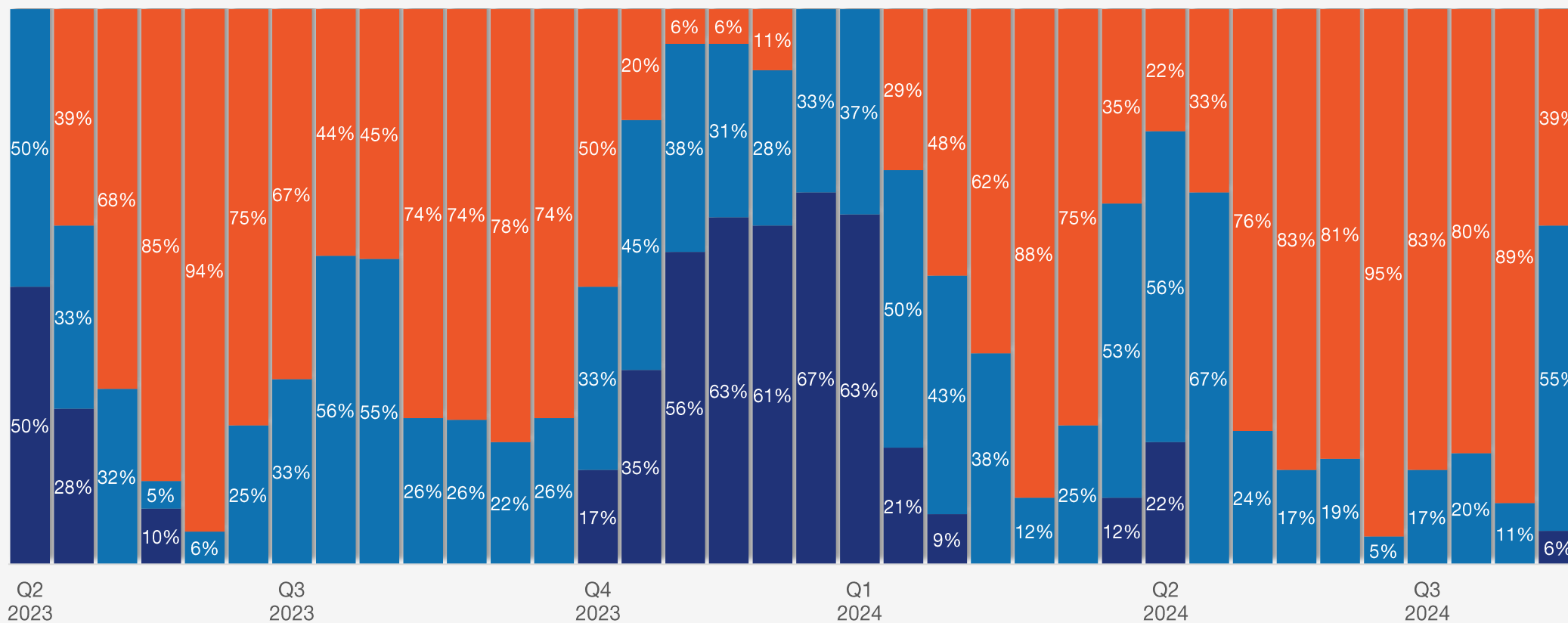
# Manufacturers' view of service center selling prices history

## Manufacturers

Which comment do you feel is representative of service center pricing right now compared to two weeks ago?

■ We see prices increasing from our service centers
 ■ We see stable prices from our service centers
 ■ We see prices decreasing from our service centers

out of 100%



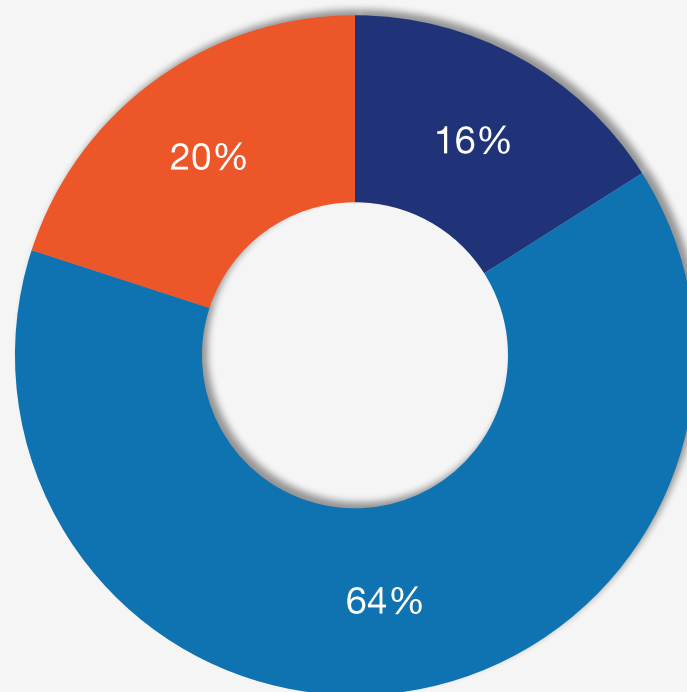
# Service center view of selling prices

## *Service centers*

Compared to two weeks ago, how is your company handling spot pricing to your customers?

■ We are raising prices   ■ We are keeping prices the same   ■ We are lowering prices

Aug. 14, 2024



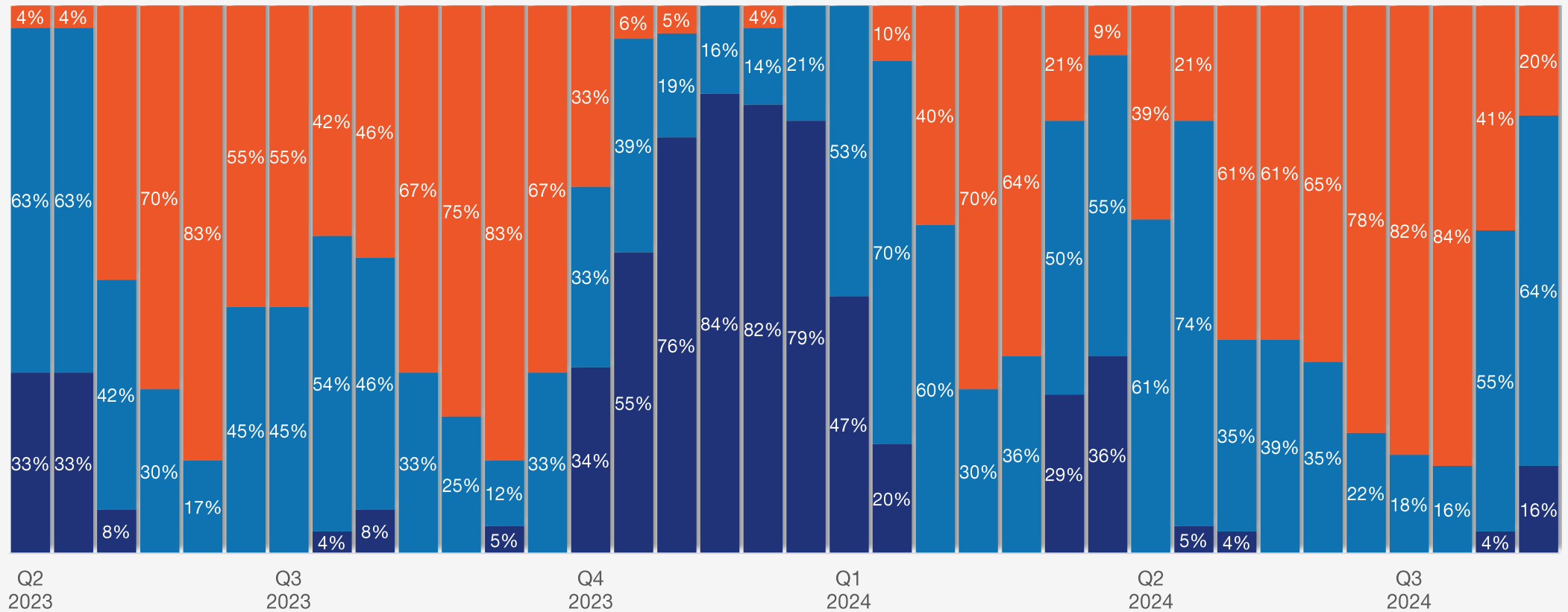
# Service center view of selling prices history

## *Service centers*

Compared to two weeks ago, how is your company handling spot pricing to your customers?

■ We are raising prices    
 ■ We are keeping prices the same    
 ■ We are lowering prices

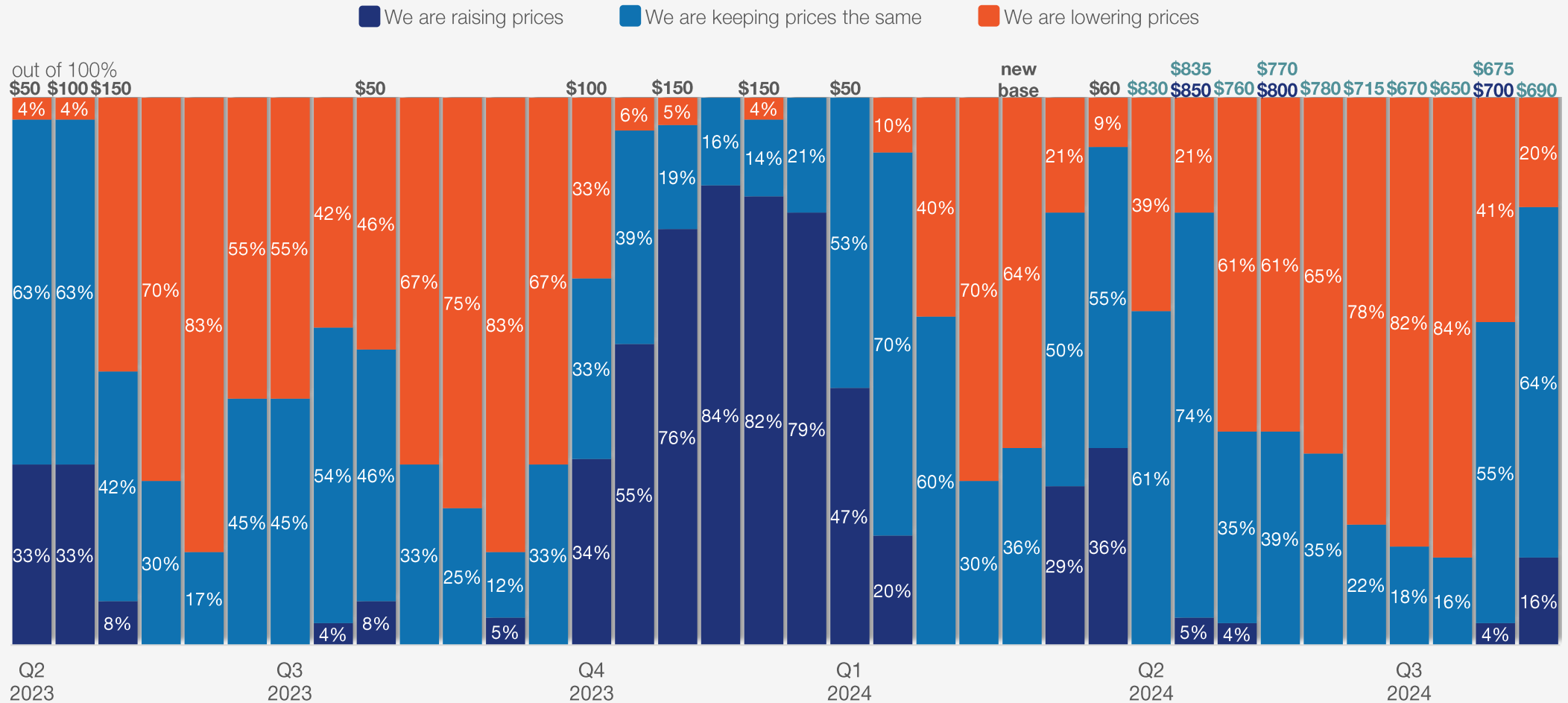
out of 100%



# Service center view of selling prices history

## Service centers

Compared to two weeks ago, how is your company handling spot pricing to your customers?



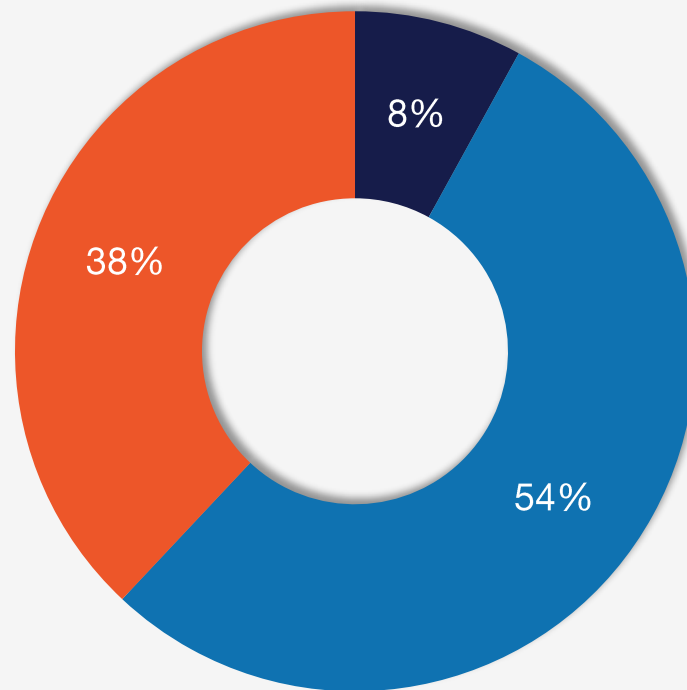
# Service centers on manufacturer orders

## *Service centers*

Are your manufacturing customers increasing orders, keeping them the same, or reducing orders?

■ Our mfg. customers are increasing orders
 ■ Our mfg. customers are maintaining orders
 ■ Our mfg. customers are reducing orders

Aug. 14, 2024



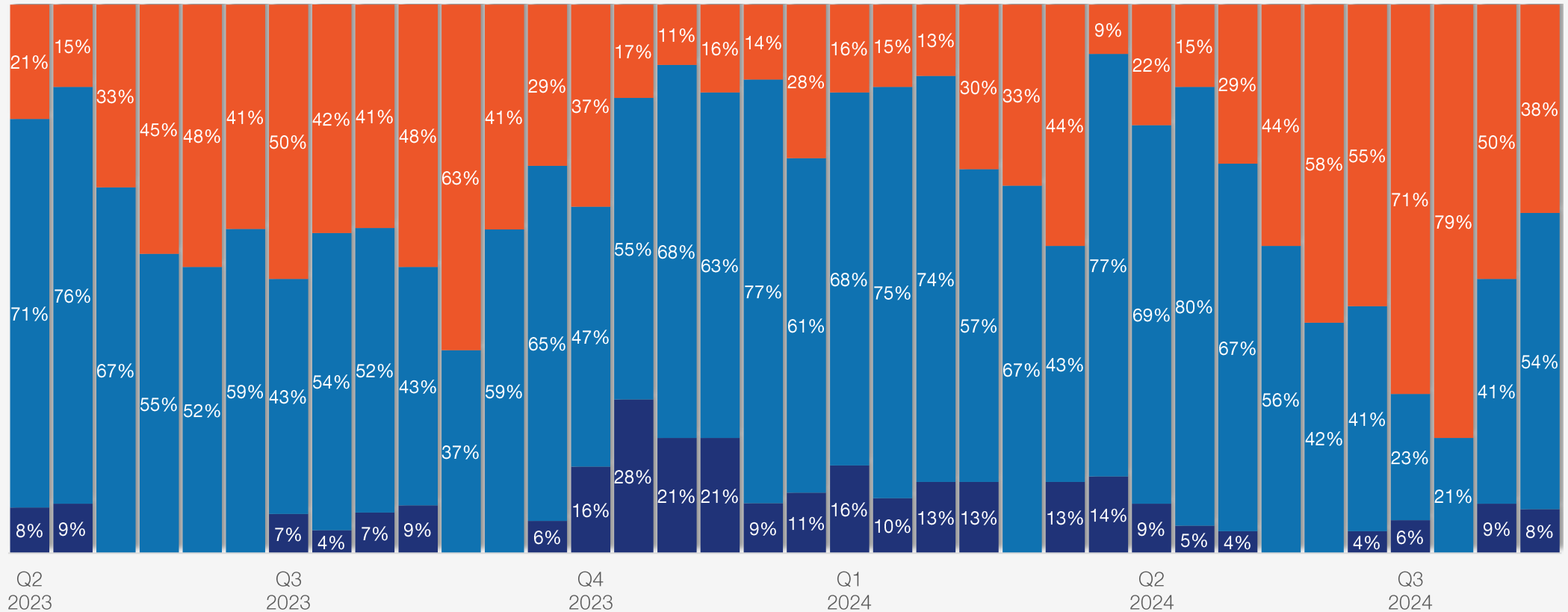
# Service centers on manufacturer orders

## *Service centers*

Are your manufacturing customers increasing orders, keeping them the same, or reducing orders?

■ Our mfg. customers are increasing orders    
 ■ Our mfg. customers are maintaining orders    
 ■ Our mfg. customers are reducing orders

out of 100%



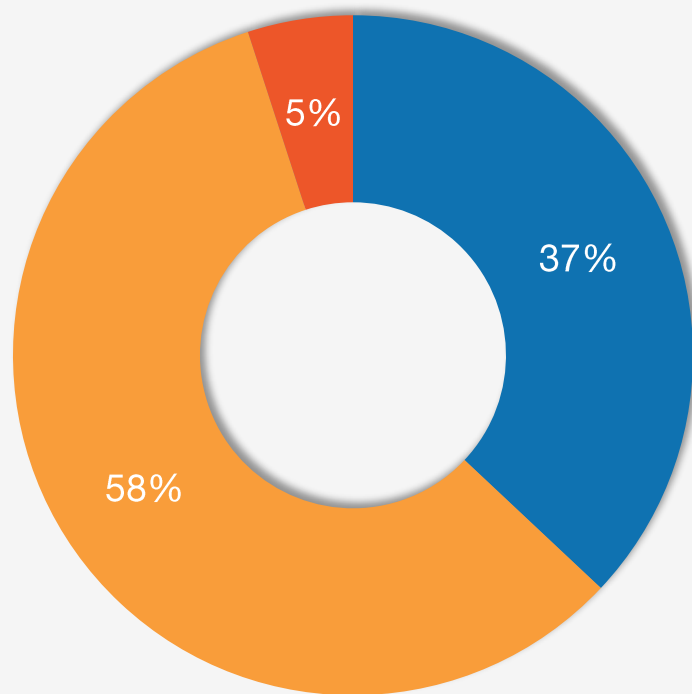


# Buyers' view of mill lead times

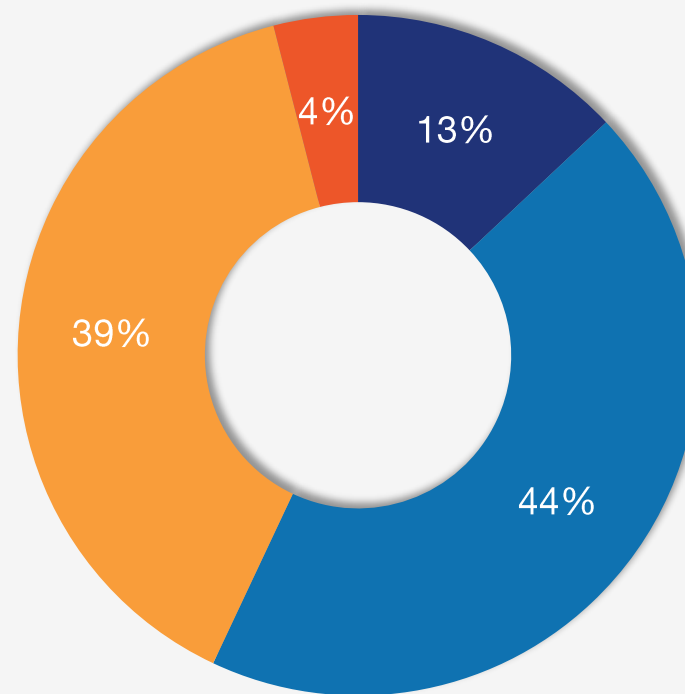
How would you describe domestic mill lead times for new orders placed right now?

■ Extremely short    
 ■ Shorter than normal    
 ■ Normal    
 ■ Slightly longer than normal    
 ■ Highly extended

Manufacturers



Service centers



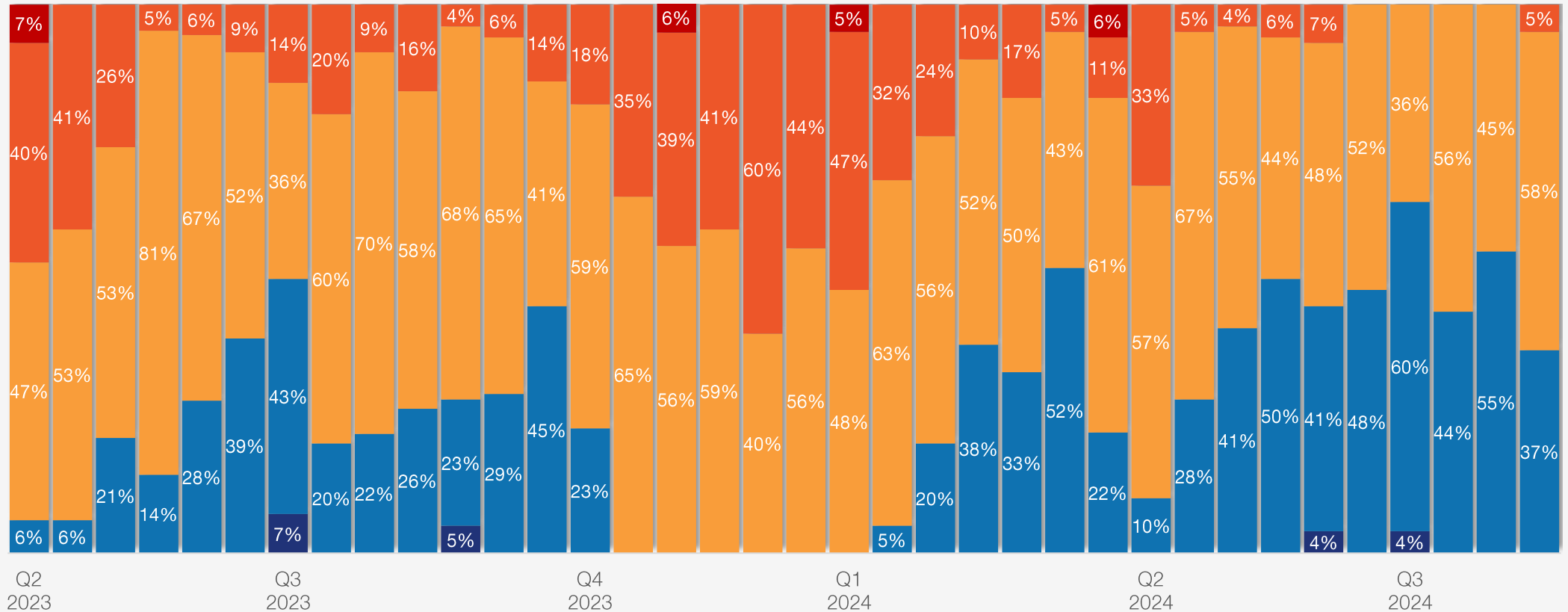
# Buyers' view of mill lead times history

## Manufacturers

How would you describe domestic mill lead times for new orders placed right now?

■ Extremely short    
 ■ Shorter than normal    
 ■ Normal    
 ■ Slightly longer than normal    
 ■ Highly extended

out of 100%



# Buyers' view of mill lead times history

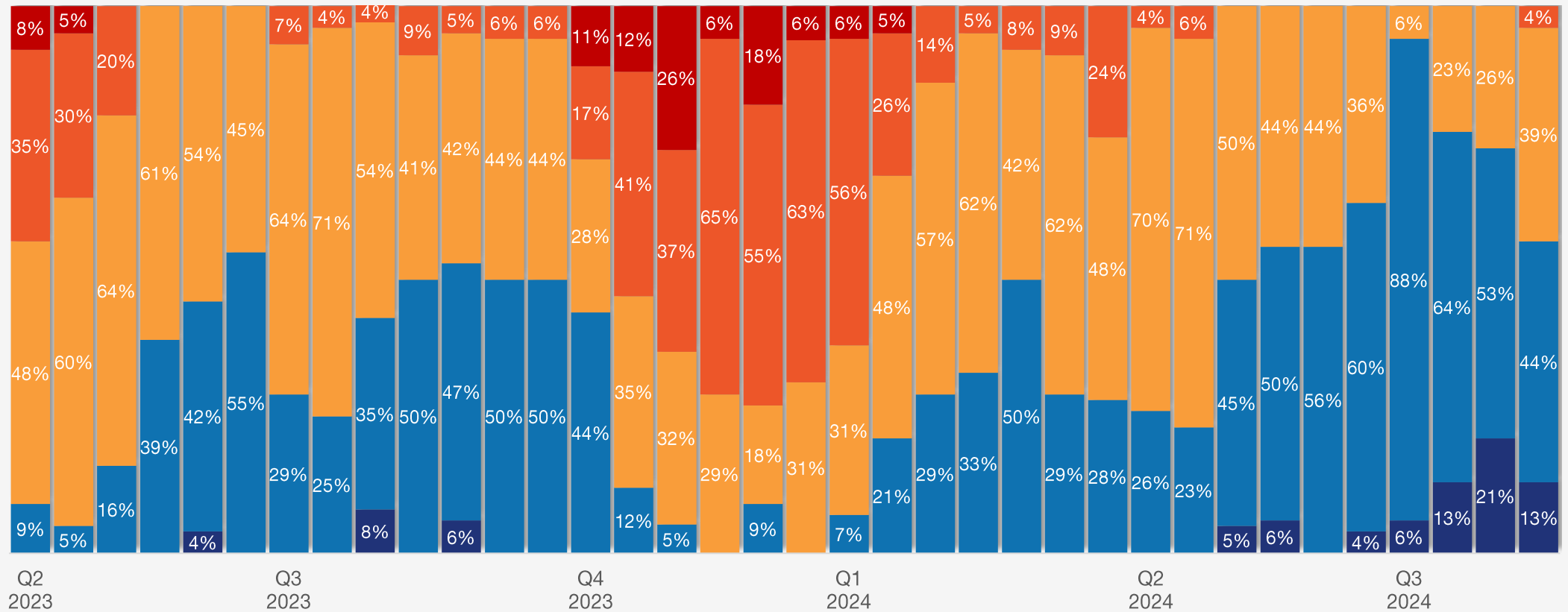
## Service centers

How would you describe domestic mill lead times for new orders placed right now?

■ Extremely short    
 ■ Shorter than normal    
 ■ Normal    
 ■ Slightly longer than normal    
 ■ Highly extended

out of 100%

Chart Title

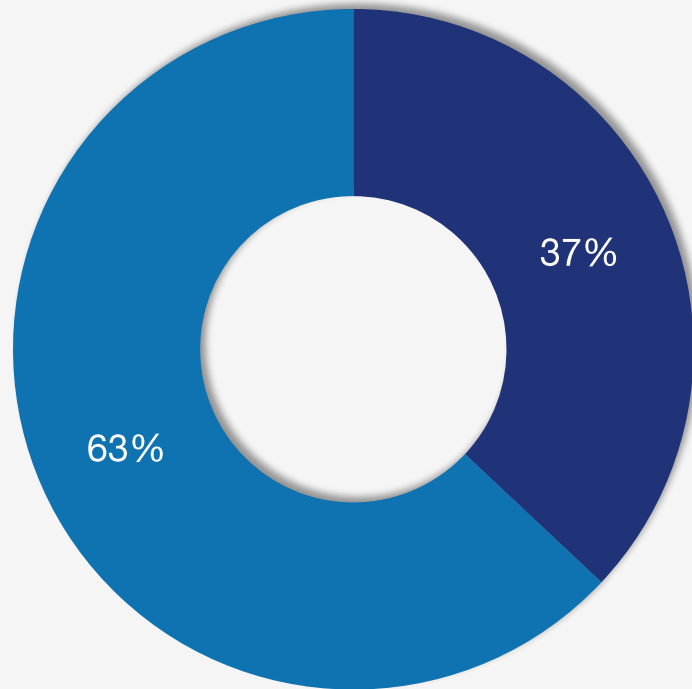


# Foreign steel purchases

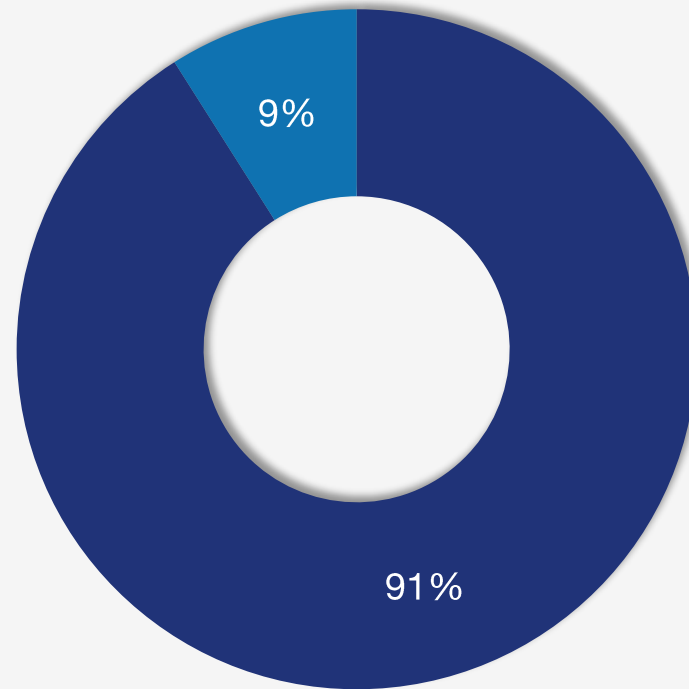
Does your company buy foreign (offshore) steel?

■ Yes   ■ No

Manufacturers



Service centers

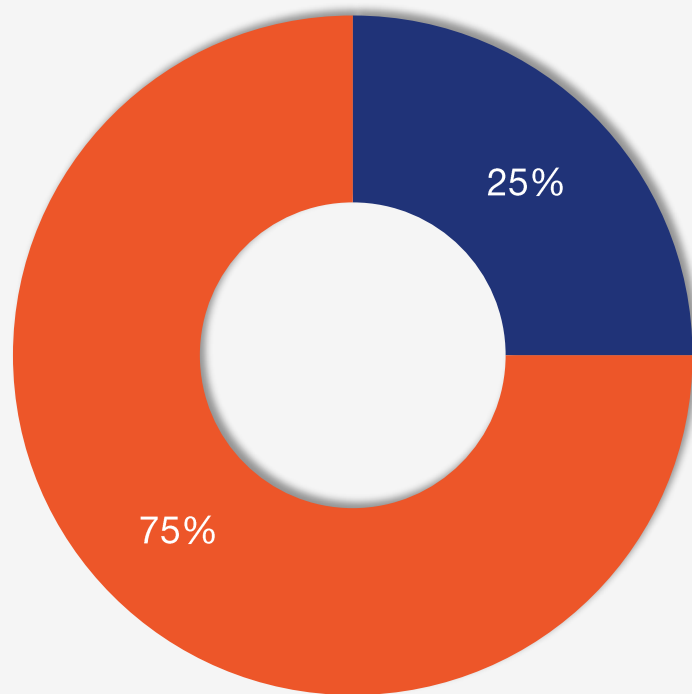


# New foreign steel orders

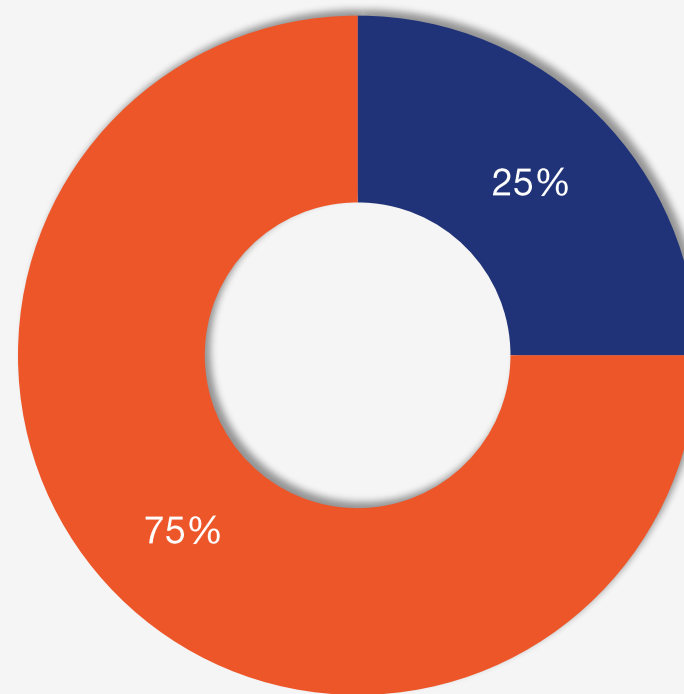
Are you buying new orders of foreign steel for future delivery?

■ Yes   ■ No

Manufacturers



Service centers

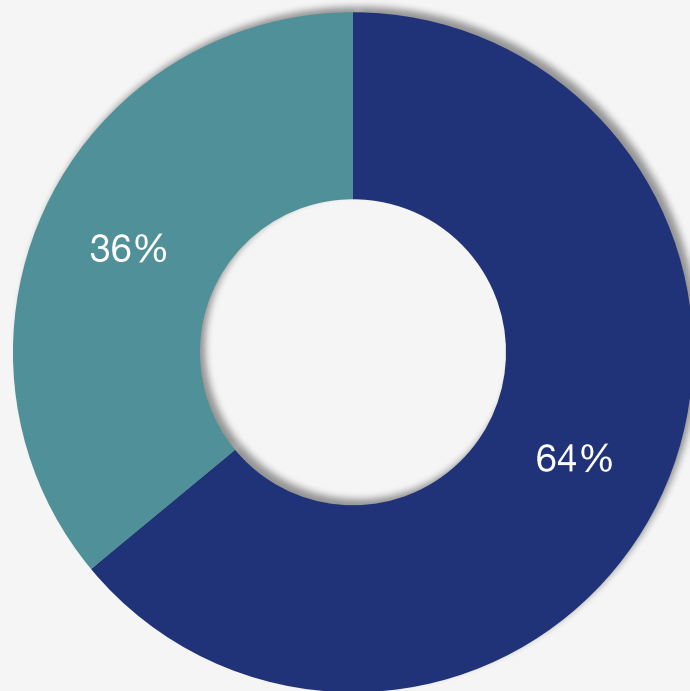


# Foreign steel competitiveness

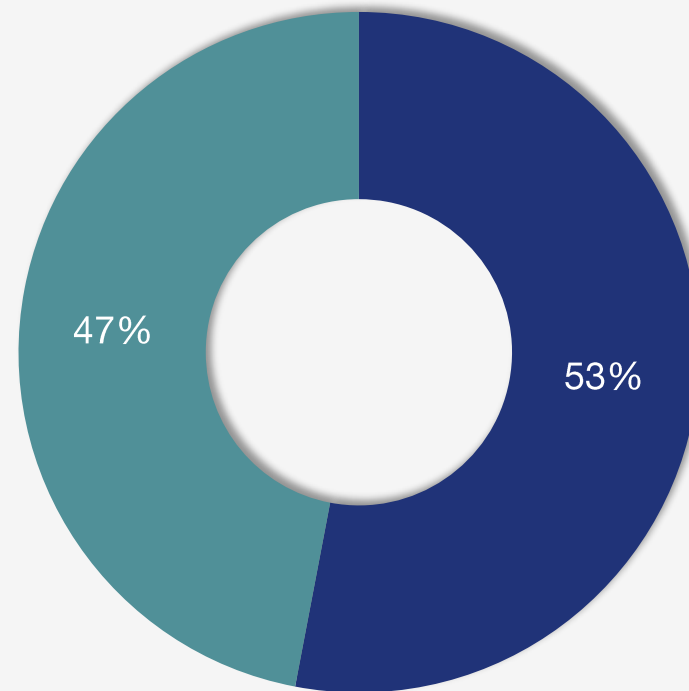
Are your foreign steel suppliers quoting you competitive prices for new orders for future delivery?

■ Yes   ■ No

Manufacturers



Service centers



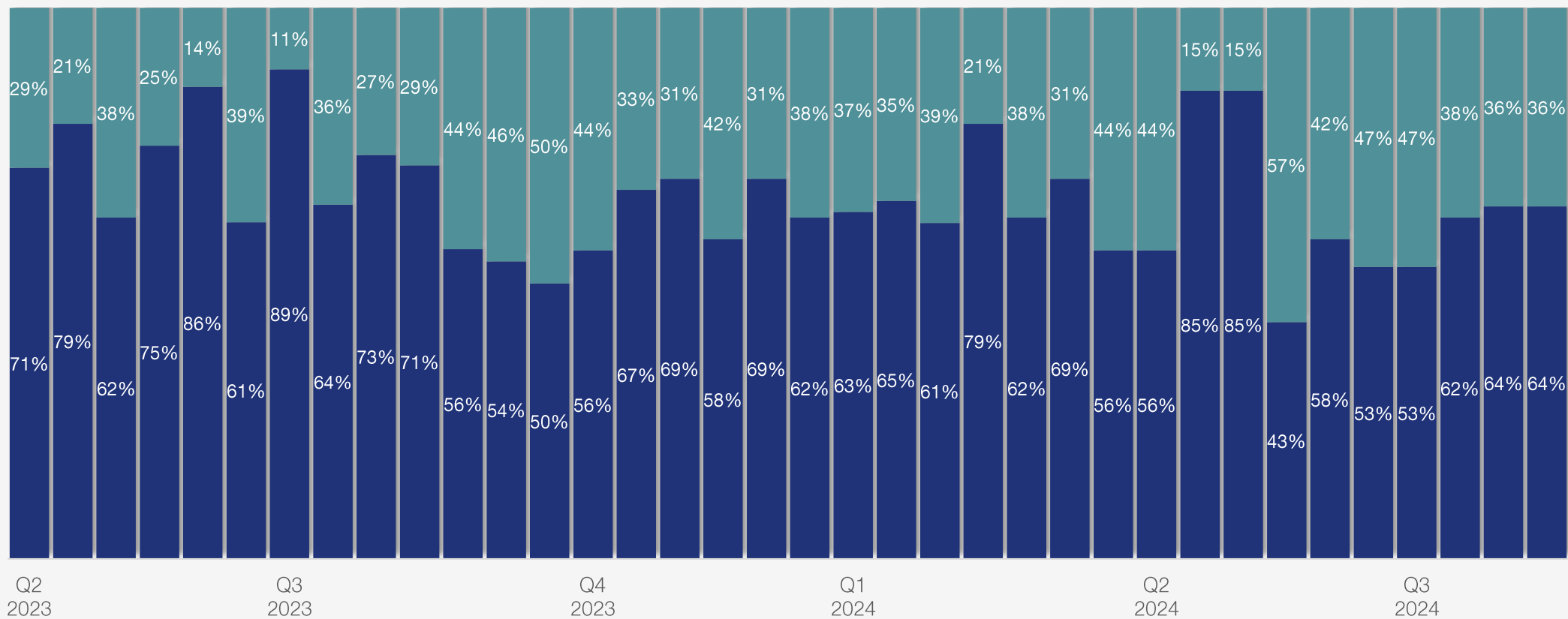
# Foreign steel competitiveness

## Manufacturers

Are your foreign steel suppliers quoting you competitive prices for new orders for future delivery?

■ Yes   ■ No

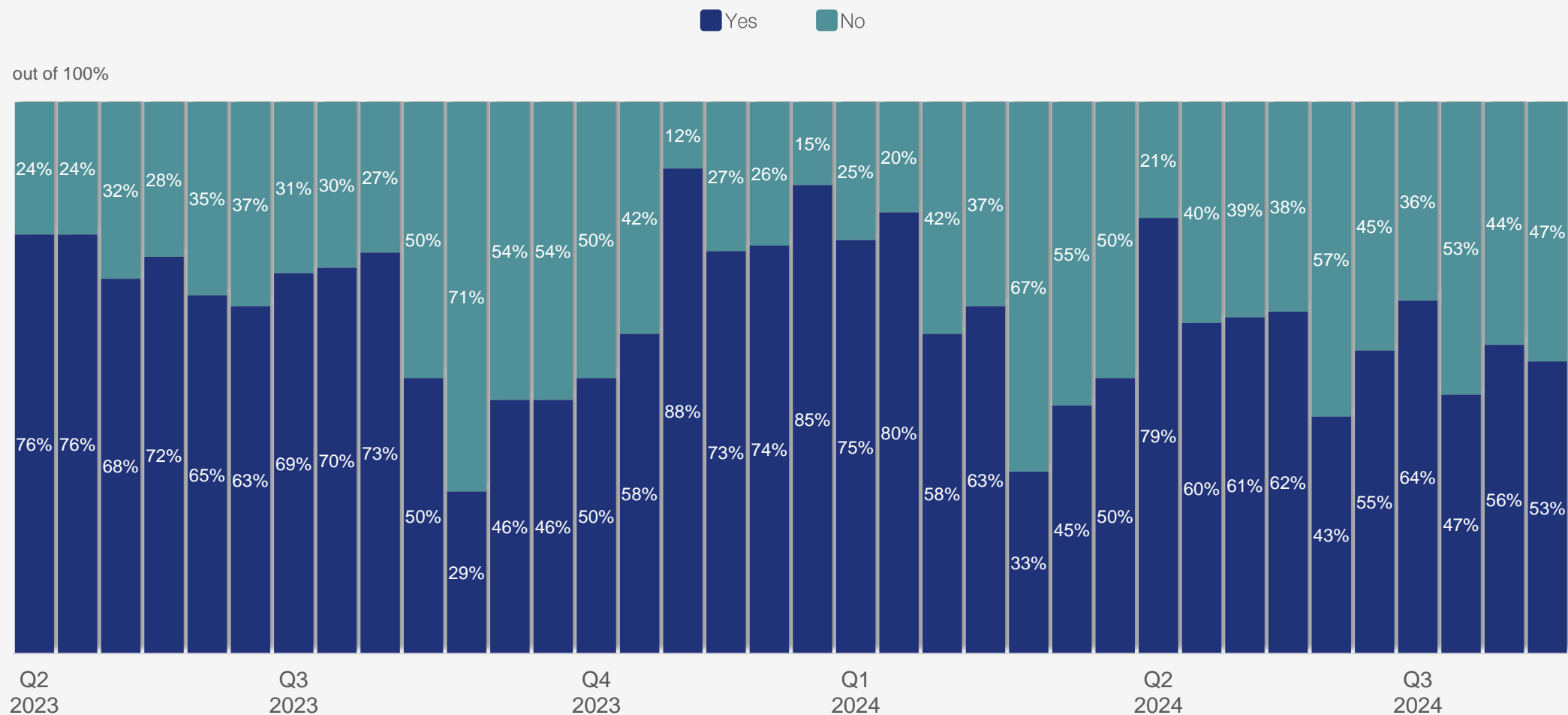
out of 100%



# Foreign steel competitiveness

## *Service centers*

Are your foreign steel suppliers quoting you competitive prices for new orders for future delivery?



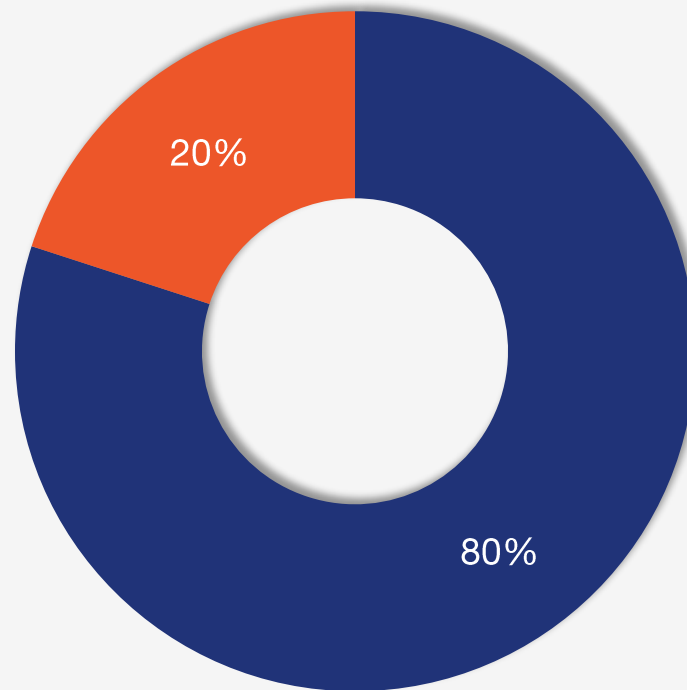


# Steel mills

Is the current order book at your mill better or worse than last month?\*

■ Better
 ■ Same
 ■ Worse

Aug. 14, 2024



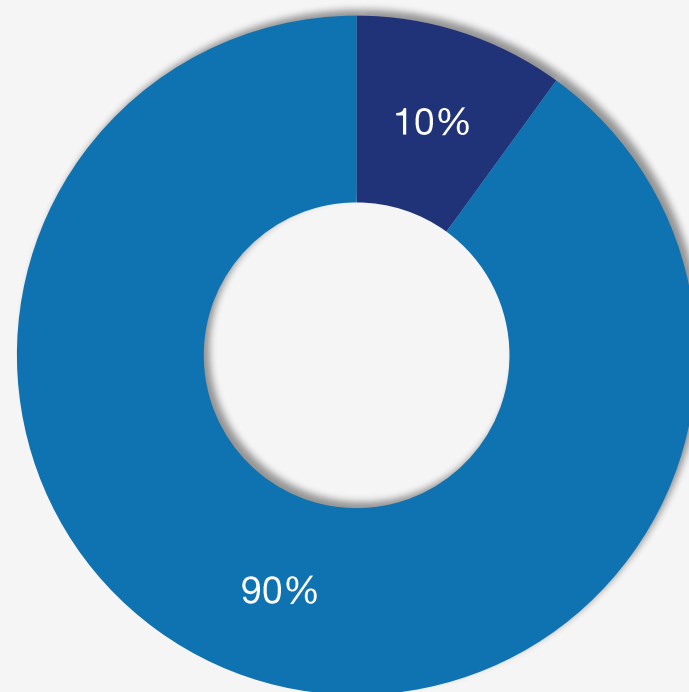
\*Limited number of responses to this question

# Trading companies

Are you seeing an increase or decrease in orders from your North American buyers?\*

■ Increase   ■ Decrease

Aug. 14, 2024



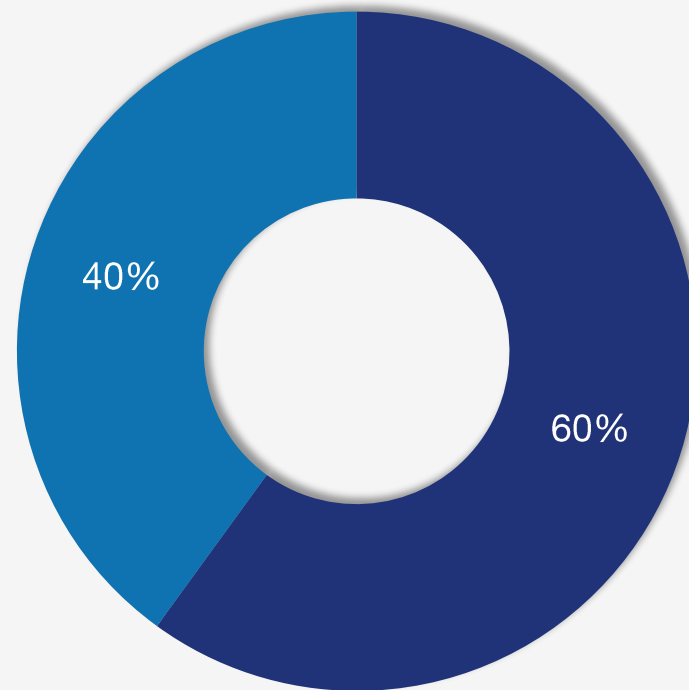
\*Limited number of responses to this question

# Trading companies

Are foreign products attractive to US buyers?\*

■ Yes   ■ No

Aug. 14, 2024



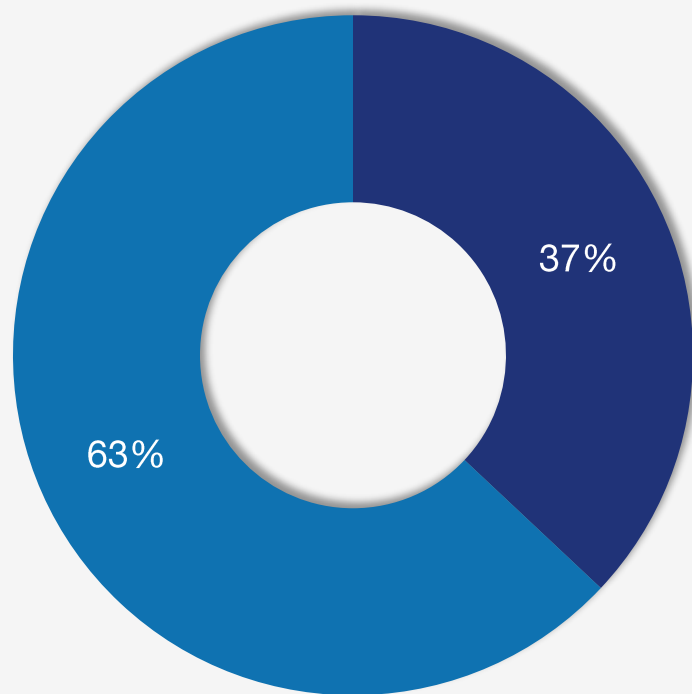
\*Limited number of responses to this question

# Trading companies on hot rolled and cold rolled

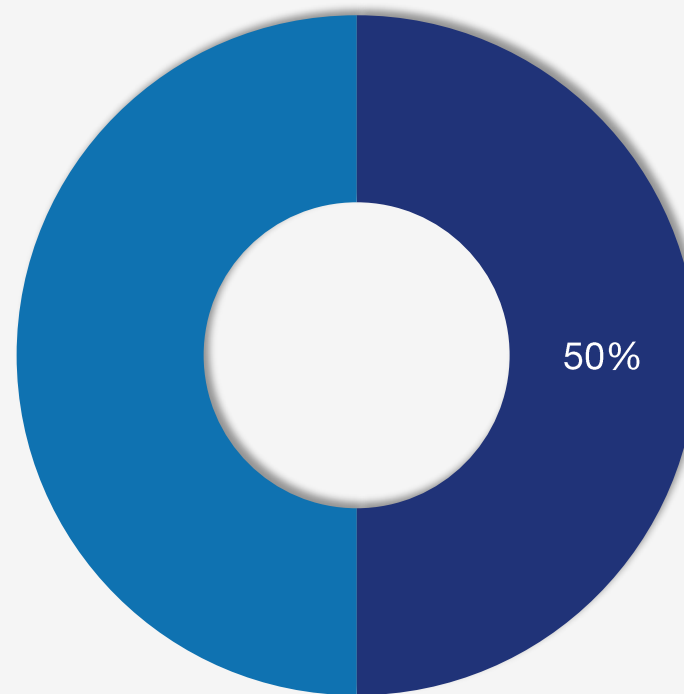
Are you able to offer pricing that attracts buyers right now?\*

■ Yes   ■ No

Hot-rolled coil



Cold-rolled coil

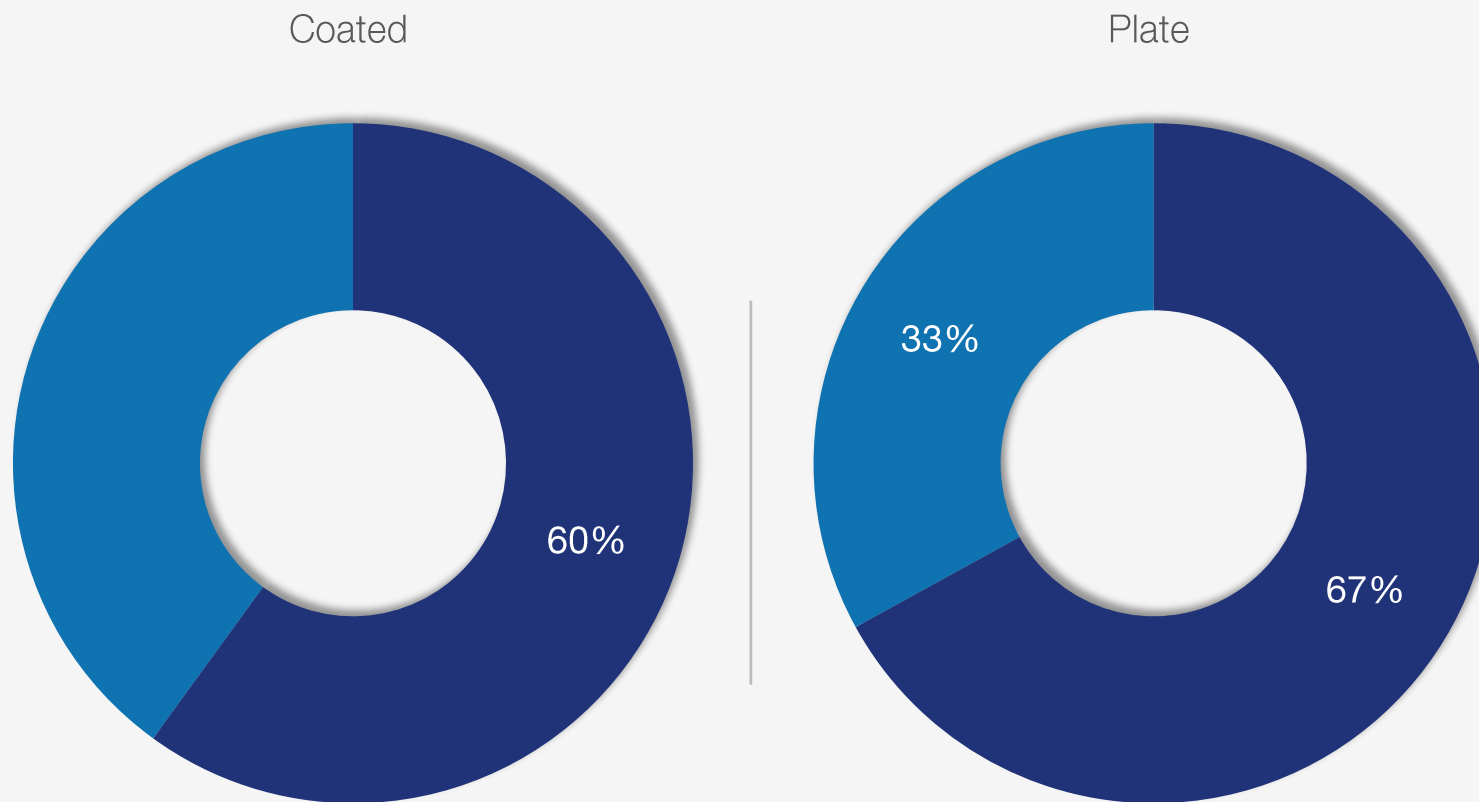


\*Limited number of responses to this question

# Trading companies on coated and plate products

Are you able to offer pricing that attracts buyers right now?\*

■ Yes   ■ No



\*Limited number of responses to this question

# Questions?

If you have any questions regarding the information presented here, please get in touch with us at [info@steelmarketupdate.com](mailto:info@steelmarketupdate.com).

We always appreciate referrals. Tell your friends, suppliers, and customers to sign up for a free trial. Contact [luis.corona@crugroup.com](mailto:luis.corona@crugroup.com)

**When you need answers...**  
**[www.steelmarketupdate.com](http://www.steelmarketupdate.com)**

Look for our next survey on Aug. 30, 2024

If you would like to participate in our survey, please contact [david@steelmarketupdate.com](mailto:david@steelmarketupdate.com)

